





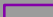






COMPARISON OF STREAM SETBACK OPTIONS TOWN OF VAIL

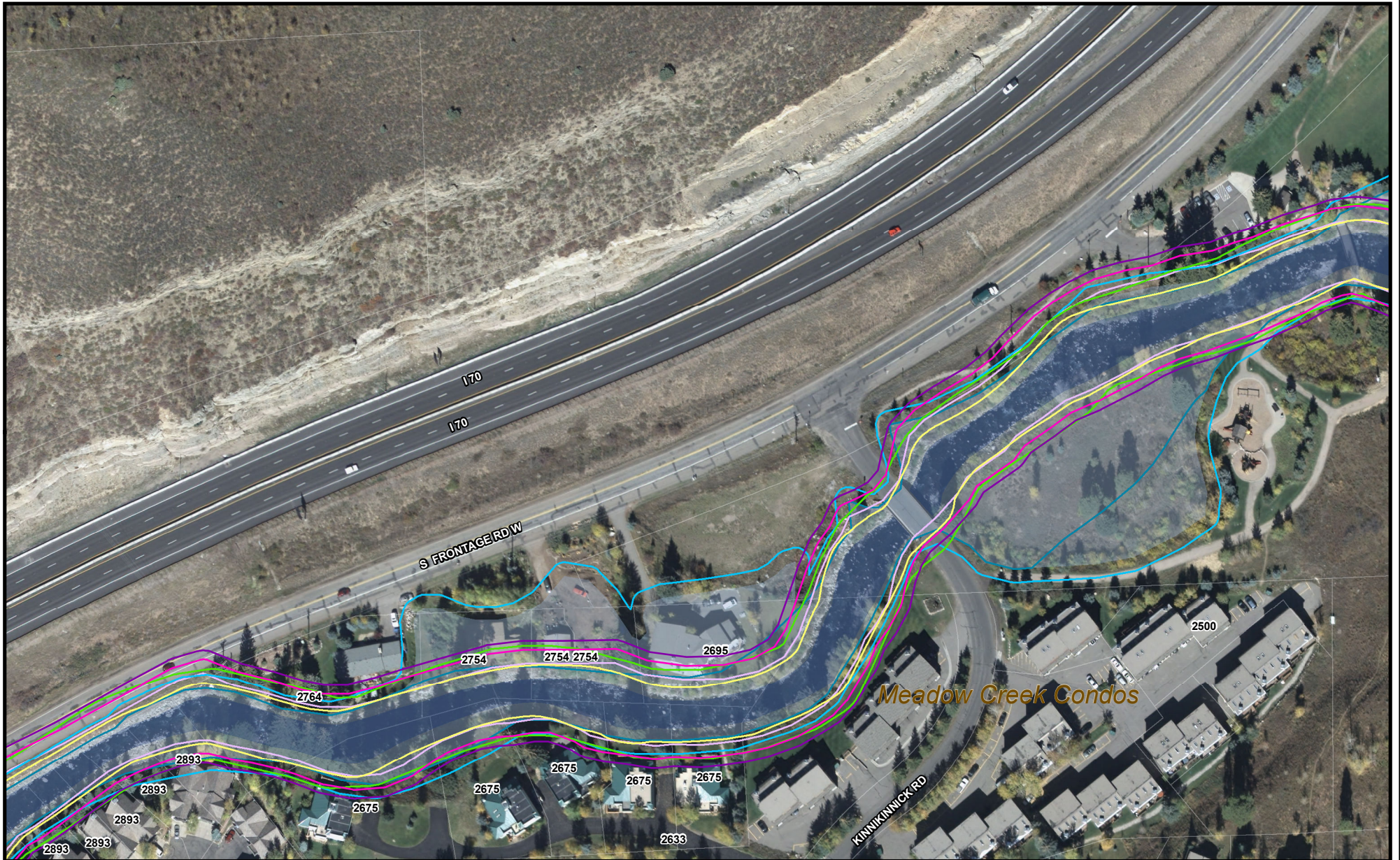


	Gore Creek Streambank (Interpreted)		Gore Creek		FEMA Floodway
	15' From Gore Creek Streambank (Interpreted)		15' From Gore Creek Edge		Fema - 100 Year Floodplain
	25' From Gore Creek Streambank (Interpreted)		Existing 50' Setback From Gore Creek Centerline		15' From FEMA 100 Year Floodplain

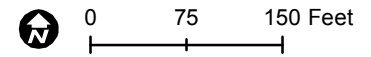

0 75 150 Feet


This map was created by the Town of Vail GIS Team. Use of this map should be for general purposes only (where shown, parcel line work is approximate).
 Data Sources:
 Aerial imagery provided by Eagle County GIS Department (town in 2008)
 Approximate property lines provided by Eagle County Assessor Department
 Stream tract surveyed in Summer of 2009 by Peak Land Consultants, Inc., under contract with the Town of Vail
 Last Modified: September 27, 2012

COMPARISON OF STREAM SETBACK OPTIONS TOWN OF VAIL



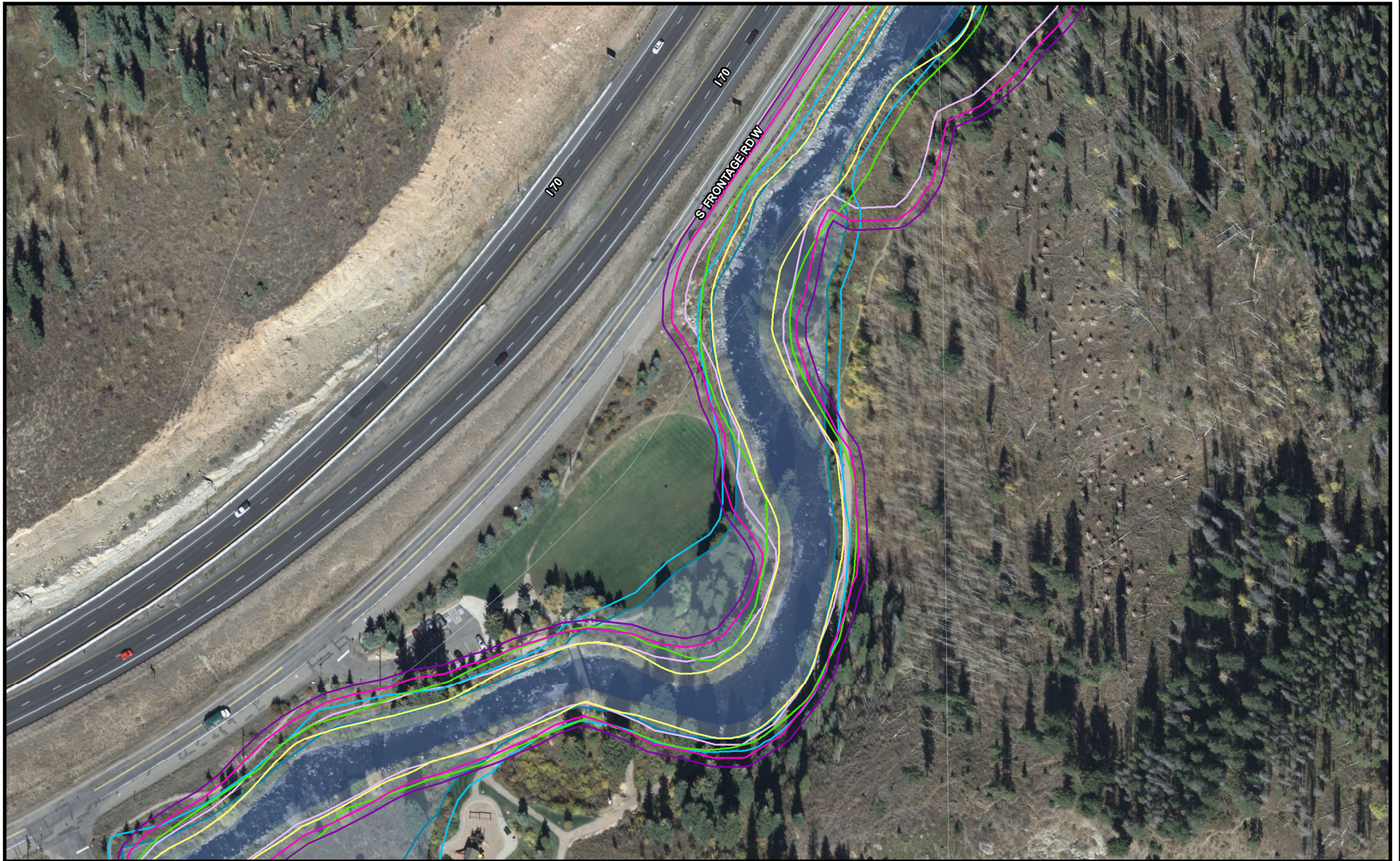
	Gore Creek Streambank (Interpreted)		Gore Creek		FEMA Floodway
	15' From Gore Creek Streambank (Interpreted)		15' From Gore Creek Edge		Fema - 100 Year Floodplain
	25' From Gore Creek Streambank (Interpreted)		Existing 50' Setback From Gore Creek Centerline		15' From FEMA 100 Year Floodplain



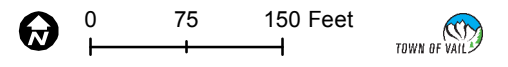
This map was created by the Town of Vail GIS Team. Use of this map should be for general purposes only (where shown, parcel line work is approximate)

Data Sources:
Aerial imagery provided by Eagle County GIS Department (flown in 2008)
Approximate property lines provided by Eagle County Assessor Department
Stream tract surveyed in Summer of 2009 by Peak Land Consultants, Inc., under contract with the Town of Vail
Last Modified: September 27, 2012

COMPARISON OF STREAM SETBACK OPTIONS TOWN OF VAIL



	Gore Creek Streambank (Interpreted)		Gore Creek		FEMA Floodway
	15' From Gore Creek Streambank (Interpreted)		15' From Gore Creek Edge		Fema - 100 Year Floodplain
	25' From Gore Creek Streambank (Interpreted)		Existing 50' Setback From Gore Creek Centerline		15' From FEMA 100 Year Floodplain

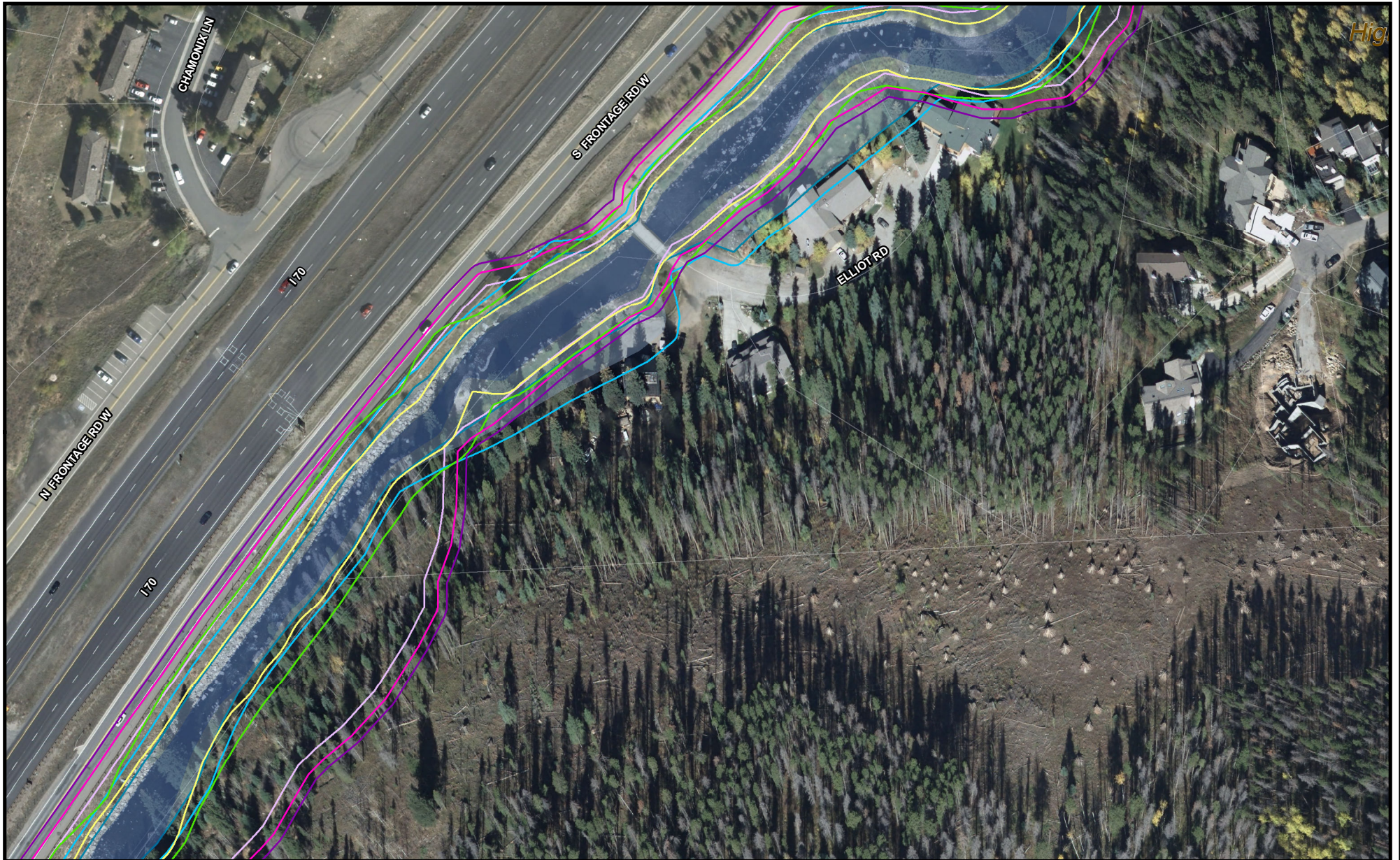


This map was created by the Town of Vail GIS Team. Use of this map should be for general purposes only (where shown, parcel line work is approximate)

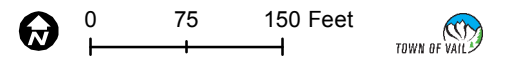
Data Sources:
 Aerial imagery provided by Eagle County GIS Department (flown in 2008)
 Approximate property lines provided by Eagle County Assessor Department
 Stream tract surveyed in Summer of 2009 by Peak Land Consultants, Inc. under contract with the Town of Vail

Last Modified: September 27, 2012

COMPARISON OF STREAM SETBACK OPTIONS TOWN OF VAIL



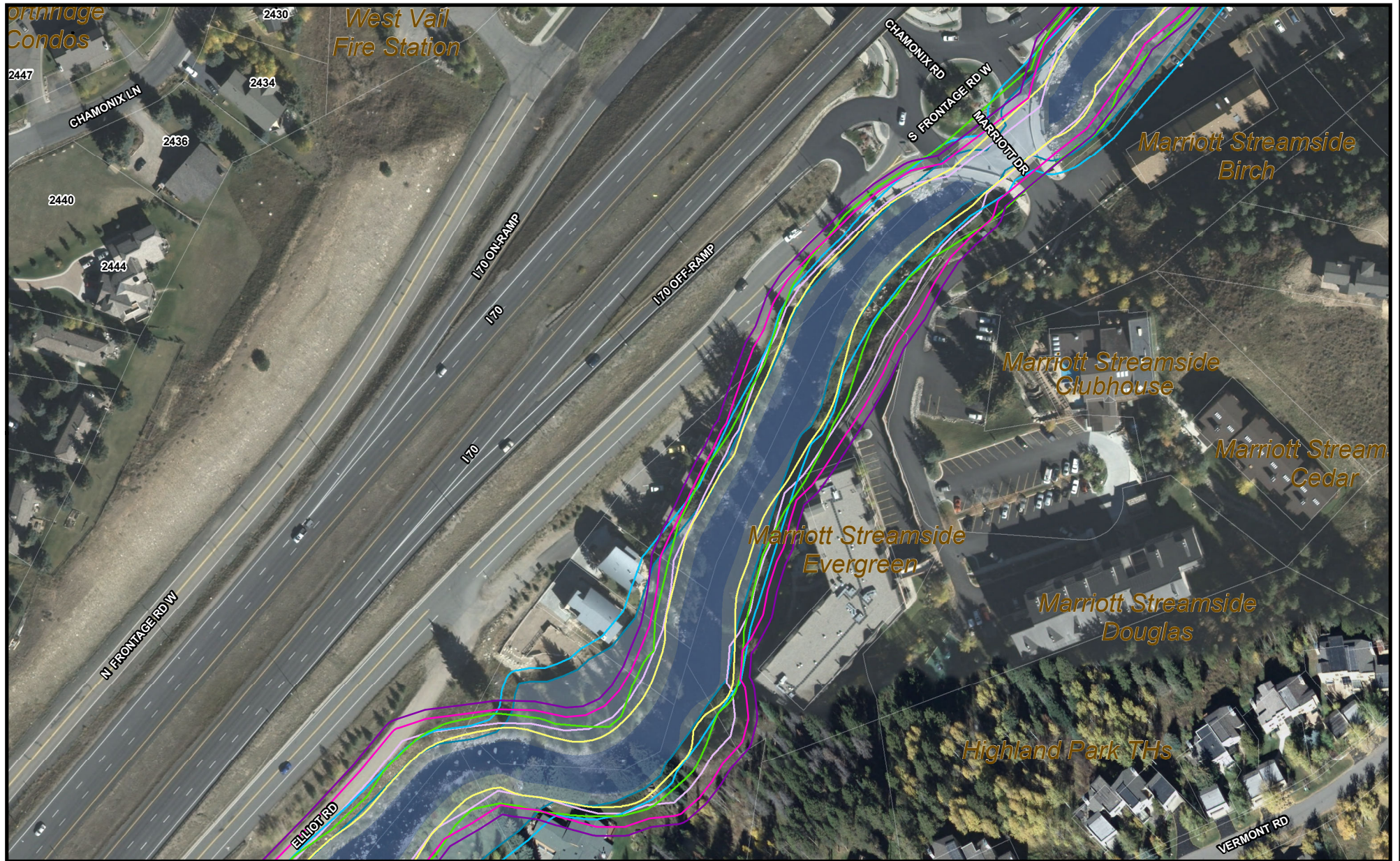
	Gore Creek Streambank (Interpreted)		Gore Creek		FEMA Floodway
	15' From Gore Creek Streambank (Interpreted)		15' From Gore Creek Edge		Fema - 100 Year Floodplain
	25' From Gore Creek Streambank (Interpreted)		Existing 50' Setback From Gore Creek Centerline		15' From FEMA 100 Year Floodplain



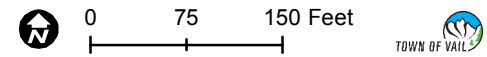
This map was created by the Town of Vail GIS Team. Use of this map should be for general purposes only (where shown, parcel line work is approximate)

Data Sources:
 Aerial imagery provided by Eagle County GIS Department (flown in 2008)
 Approximate property lines provided by Eagle County Assessor Department
 Stream tract surveyed in Summer of 2009 by Peak Land Consultants, Inc., under contract with the Town of Vail
 Last Modified: September 27, 2012

COMPARISON OF STREAM SETBACK OPTIONS TOWN OF VAIL



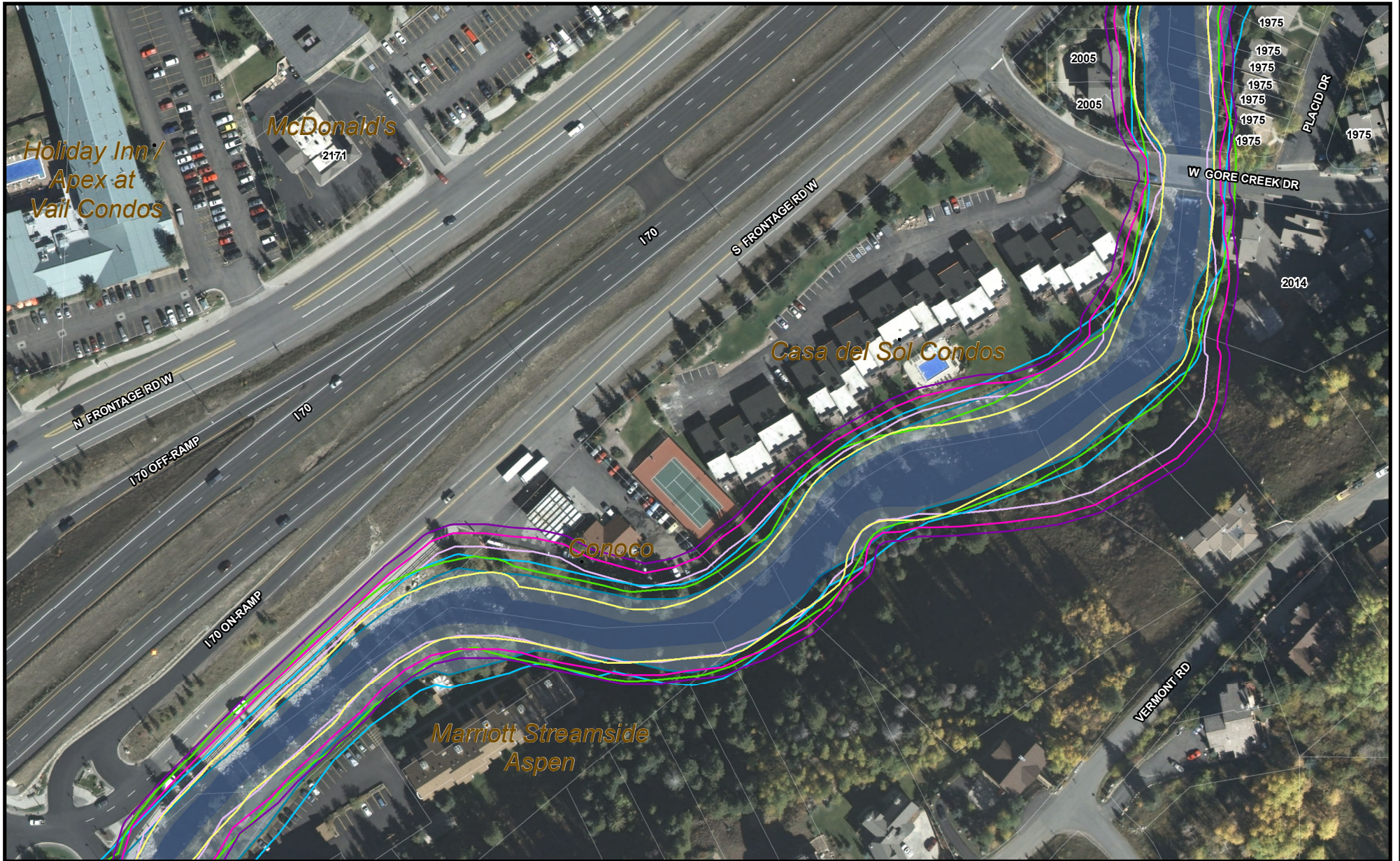
	Gore Creek Streambank (Interpreted)		Gore Creek		FEMA Floodway
	15' From Gore Creek Streambank (Interpreted)		15' From Gore Creek Edge		Fema - 100 Year Floodplain
	25' From Gore Creek Streambank (Interpreted)		Existing 50' Setback From Gore Creek Centerline		15' From FEMA 100 Year Floodplain



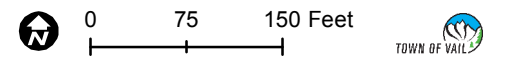
This map was created by the Town of Vail GIS Team. Use of this map should be for general purposes only (where shown, parcel line work is approximate)

Data Sources:
 Aerial imagery provided by Eagle County GIS Department (flown in 2008)
 Approximate property lines provided by Eagle County Assessor Department
 Stream tract surveyed in Summer of 2009 by Peak Land Consultants, Inc., under contract with the Town of Vail
 Last Modified: September 27, 2012

COMPARISON OF STREAM SETBACK OPTIONS TOWN OF VAIL



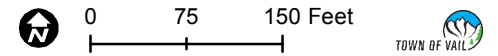
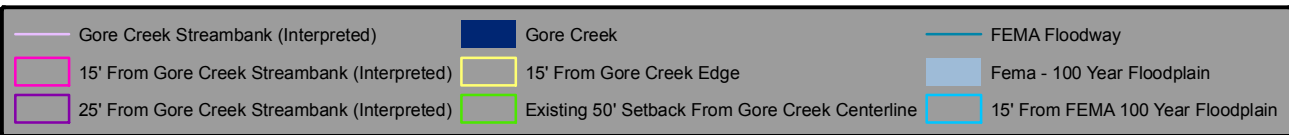
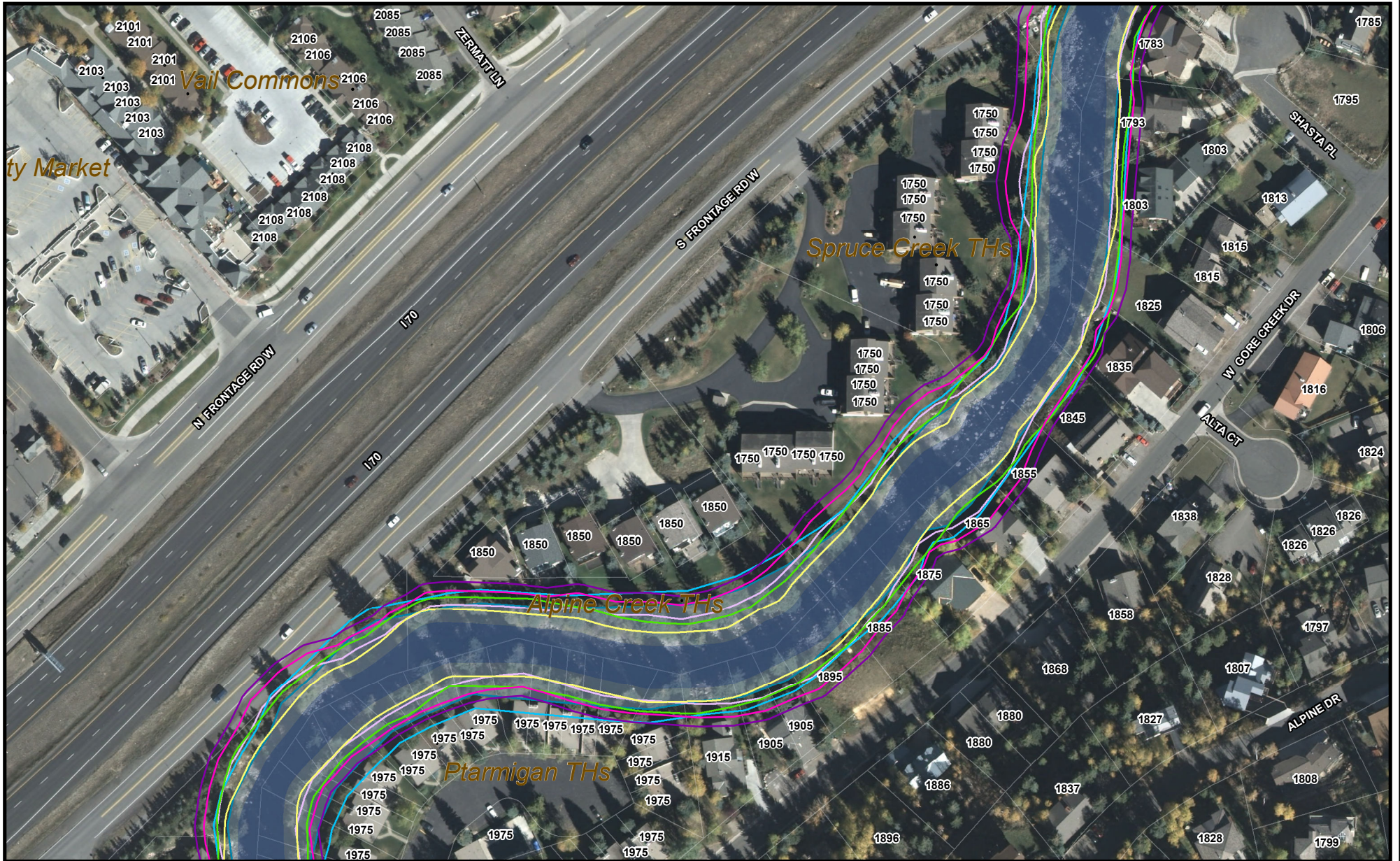
	Gore Creek Streambank (Interpreted)		Gore Creek		FEMA Floodway
	15' From Gore Creek Streambank (Interpreted)		15' From Gore Creek Edge		Fema - 100 Year Floodplain
	25' From Gore Creek Streambank (Interpreted)		Existing 50' Setback From Gore Creek Centerline		15' From FEMA 100 Year Floodplain



This map was created by the Town of Vail GIS Team. Use of this map should be for general purposes only (where shown, parcel line work is approximate)

Data Sources:
 Aerial imagery provided by Eagle County GIS Department (flown in 2008)
 Approximate property lines provided by Eagle County Assessor Department
 Stream tract surveyed in Summer of 2009 by Peak Land Consultants, Inc., under contract with the Town of Vail
 Last Modified: September 27, 2012

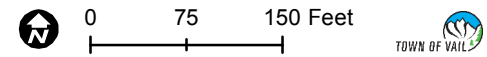
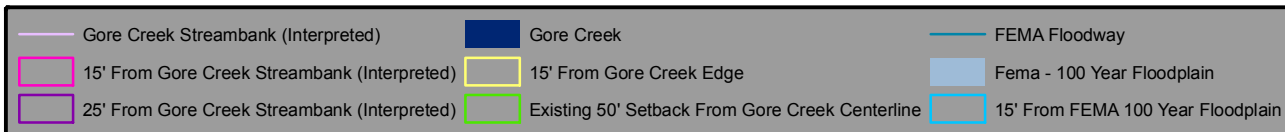
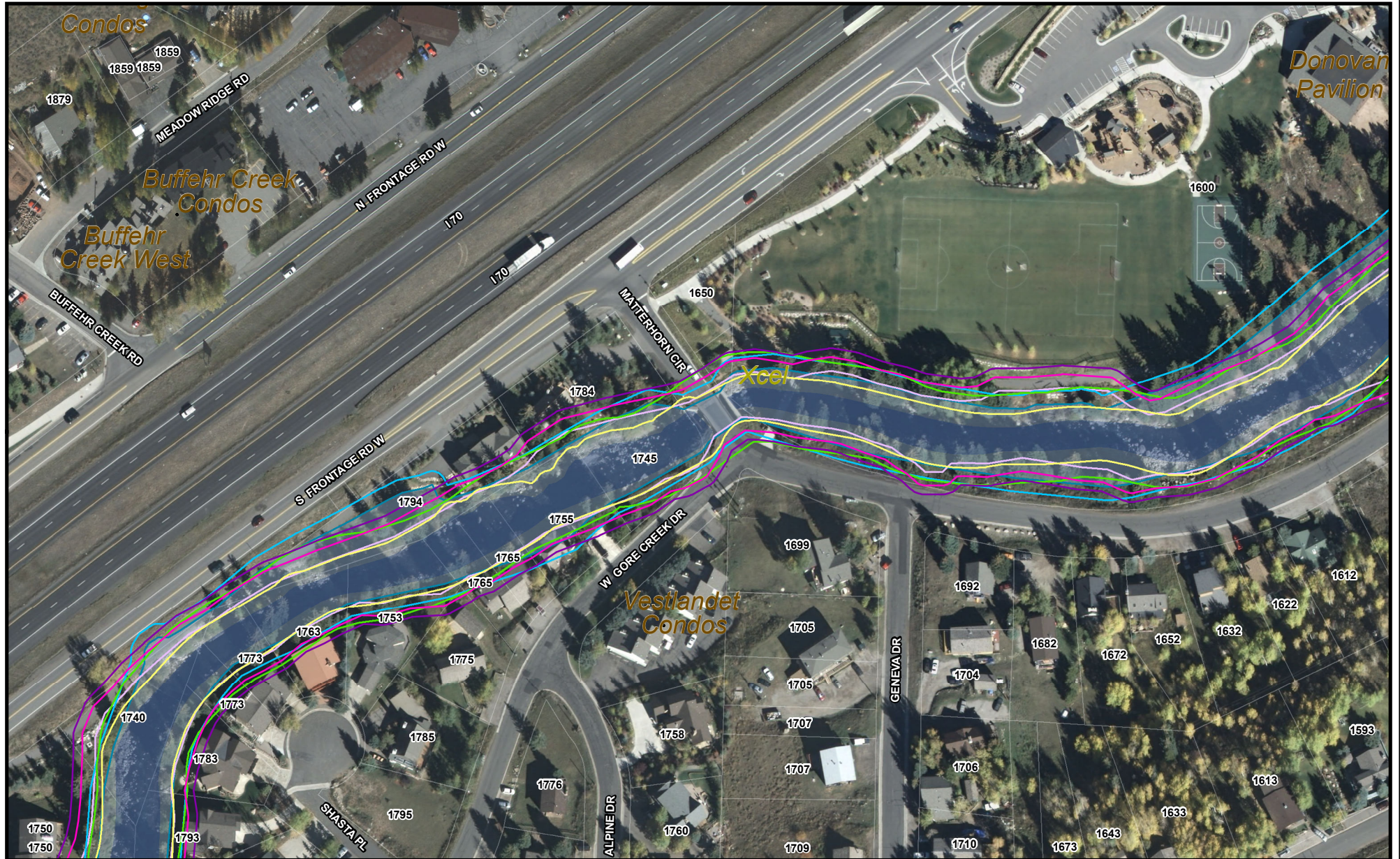
COMPARISON OF STREAM SETBACK OPTIONS TOWN OF VAIL



This map was created by the Town of Vail GIS Team. Use of this map should be for general purposes only (where shown, parcel line work is approximate)

Data Sources:
Aerial imagery provided by Eagle County GIS Department (flown in 2008)
Approximate property lines provided by Eagle County Assessor Department
Stream tract surveyed in Summer of 2009 by Peak Land Consultants, Inc. under contract with the Town of Vail
Last Modified: September 27, 2012

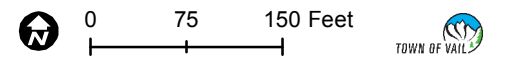
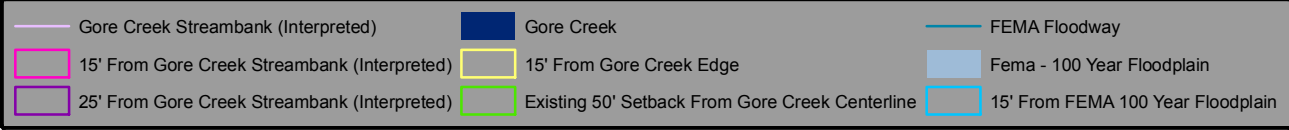
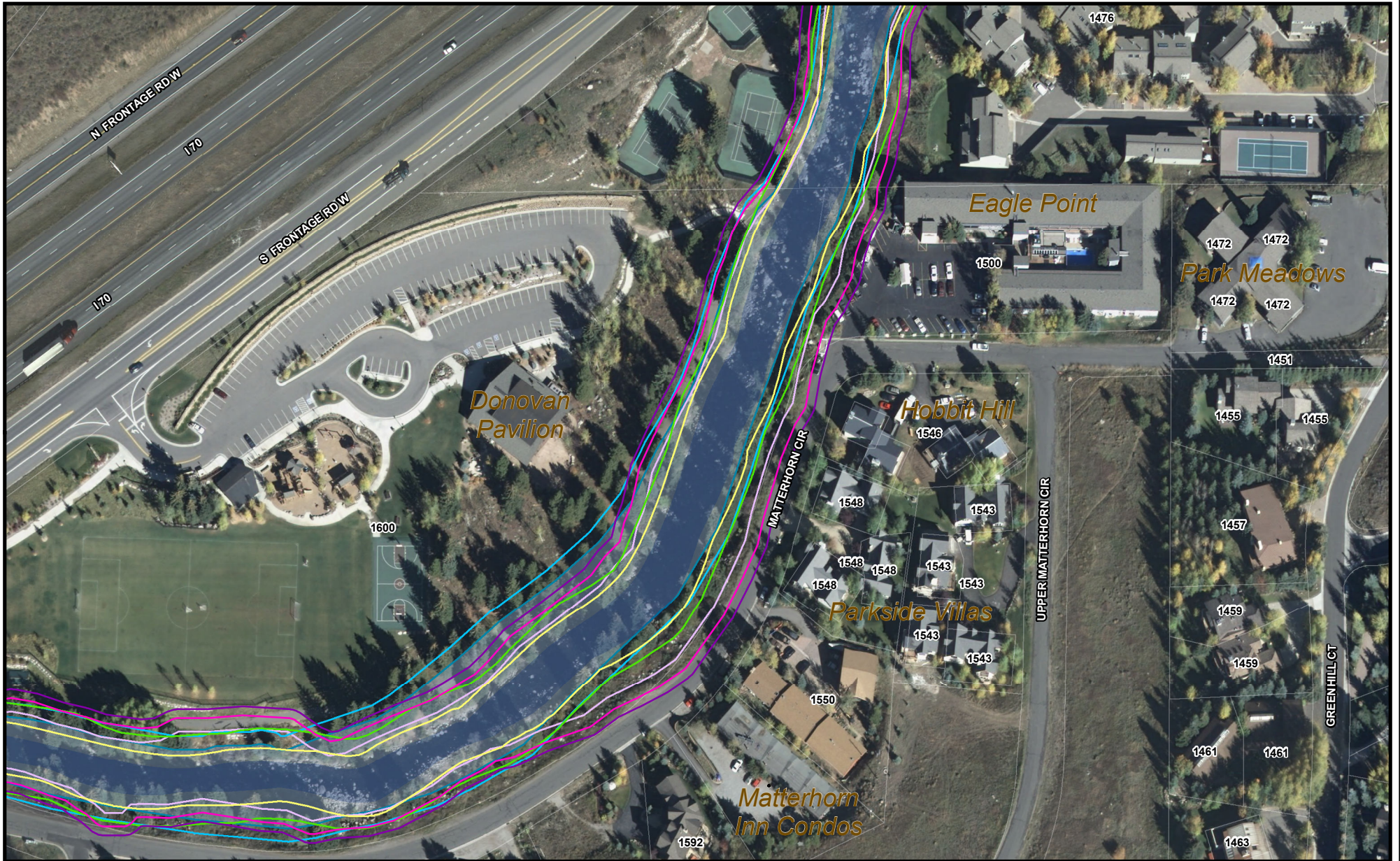
COMPARISON OF STREAM SETBACK OPTIONS TOWN OF VAIL



This map was created by the Town of Vail GIS Team. Use of this map should be for general purposes only (where shown, parcel line work is approximate)

Data Sources:
Aerial imagery provided by Eagle County GIS Department (flown in 2008)
Approximate property lines provided by Eagle County Assessor Department
Stream tract surveyed in Summer of 2009 by Peak Land Consultants, Inc., under contract with the Town of Vail
Last Modified: September 27, 2012

COMPARISON OF STREAM SETBACK OPTIONS TOWN OF VAIL



This map was created by the Town of Vail GIS Team. Use of this map should be for general purposes only (where shown, parcel line work is approximate)

Data Sources:
 Aerial imagery provided by Eagle County GIS Department (flown in 2008)
 Approximate property lines provided by Eagle County Assessor Department
 Stream tract surveyed in Summer of 2009 by Peak Land Consultants, Inc., under contract with the Town of Vail

Last Modified: September 27, 2012