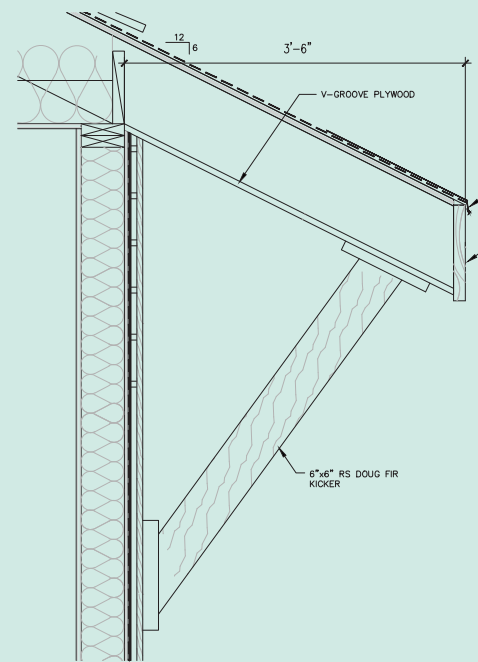
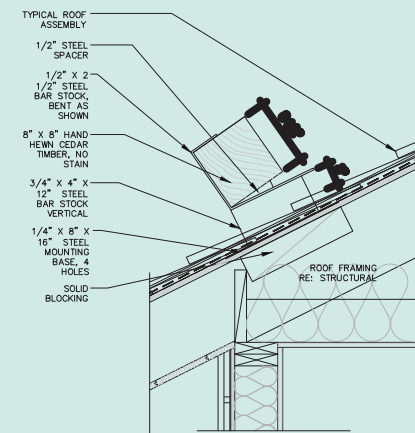


DRAWINGS FROM APPROVED DRB PACKAGE DATED 2020.02.09



3 TYPICAL KICKER - ROOF
NTS



2 TYPICAL SNOW FENCE - ROOF
NTS



2 BUILDINGS 1/2/3 - NORTH ELEVATION
1/8" = 1'-0"

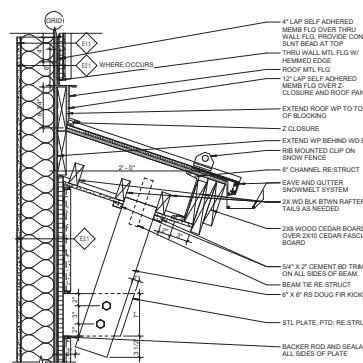
BUILDING DESIGN

CONSTRUCTION DETAILS

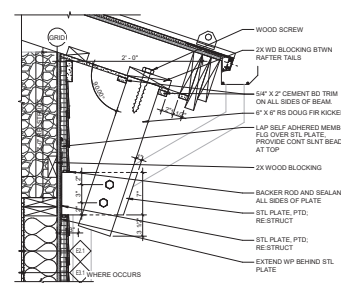
The roof kicker angle was updated as the previous design did not meet code minimum head clearance at walkways. Snow fence design was updated by raising the fences to help keep snow on the roof and building entry points were updated per the Town of Vail comments.

- 27** Change high and low roof kicker angle to comply with code clearances.
- 31** Update snow fence design for a deeper snow load for life safety and code compliance.
- 37** Increase member sizes at entry elements per DRB conditions of approval dated 2020.03.04.

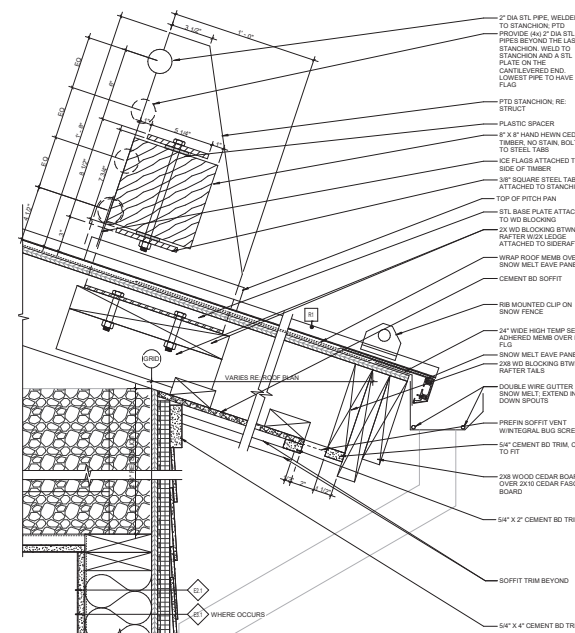
PROPOSED DESIGN



3 TYPICAL KICKER @ LOWER ROOF
1/12" = 1'-0"



4 TYPICAL KICKER @ UPPER ROOF
1/12" = 1'-0"



1 TYPICAL SNOW FENCE - ROOF
1/12" = 1'-0"



37

27

31