

PRESENTATION BY
Ryan Kenney

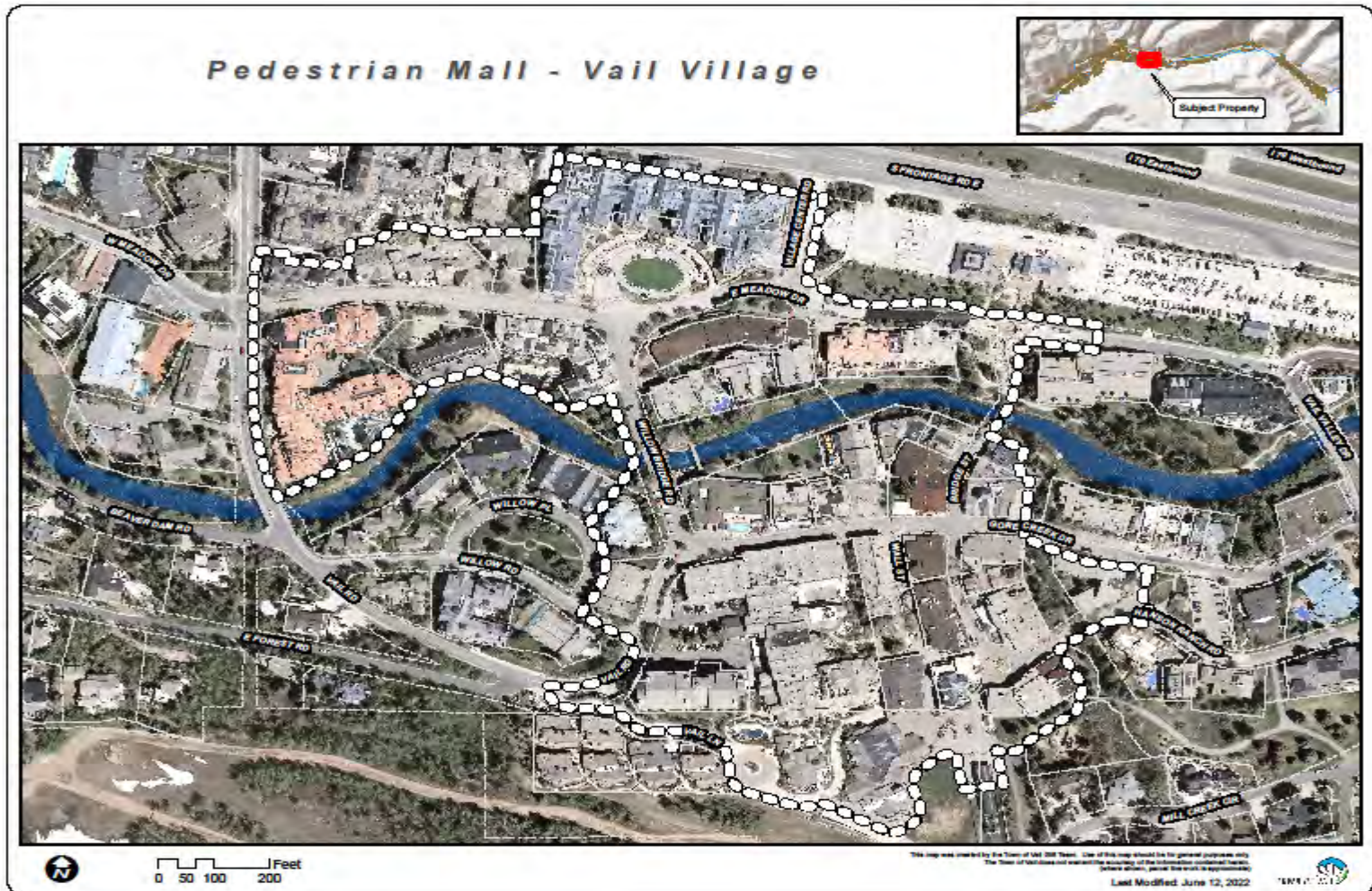
**VAIL VILLAGE
LOADING AND
DELIVERY UPDATE**



CHANGES TO MAPS

- The maps were removed from the ordinance and will be kept on file with the Town Clerk.
- The boundary maps for the Pedestrian Mall Area (PMA) and Village Core remain unchanged.

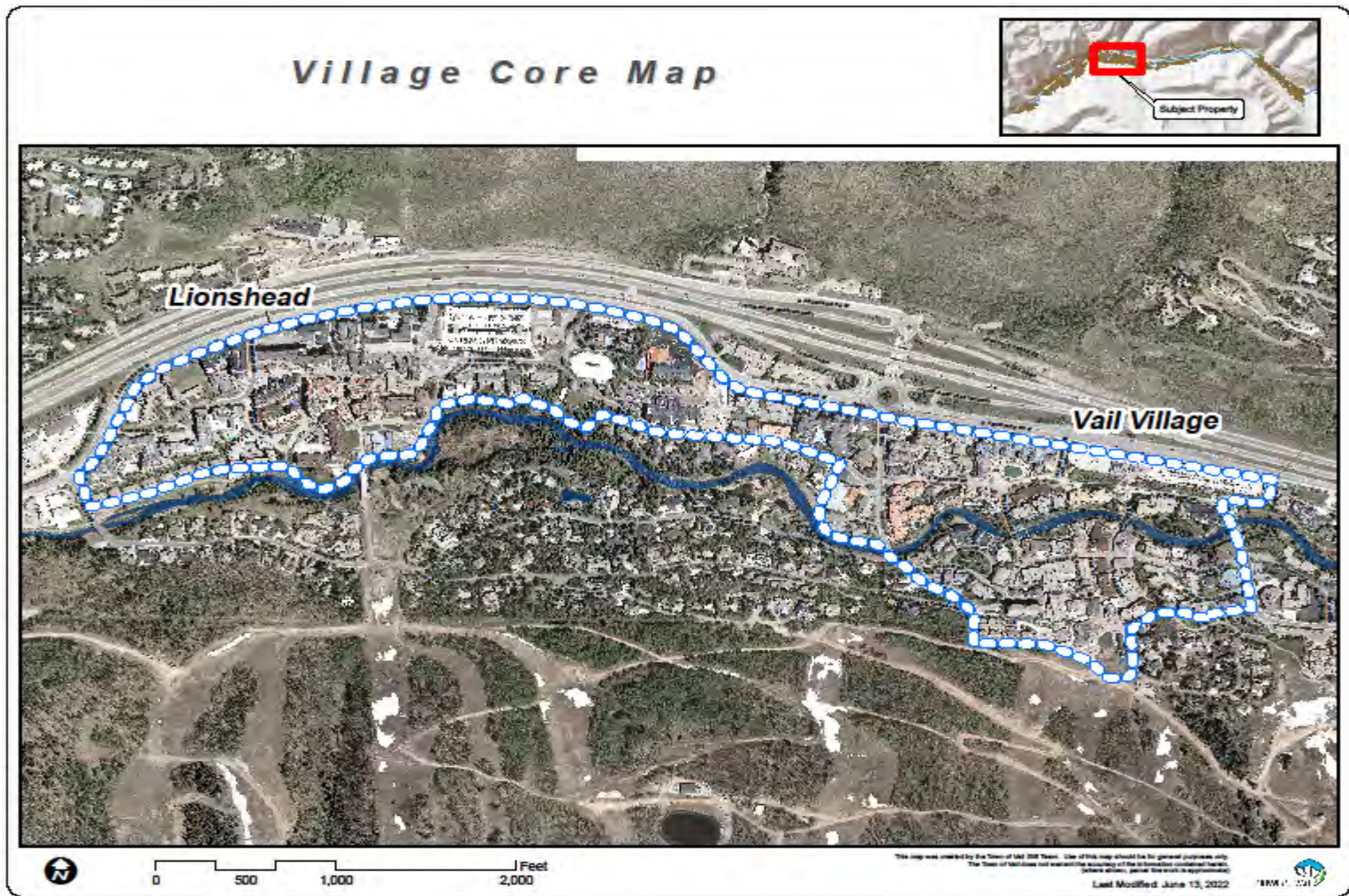
VILLAGE PMA MAP



LIONSHEAD PMA MAP



VILLAGE CORE MAP



CHANGES TO MAPS

- The Village Loading and Delivery map has the following changes;
 - Close in, on street parking is available from 9:00 to 11:00AM each day for local business owners and their employees.
 - Ski tuning was changed to 5:00 to 8:00AM along with 5:00 to 6:00PM each day.
 - E-Vail courier was changed to Town Approved Contractor.
 - Courier Zone was changed to High Volume Commercial Carrier (HVCC) Zone.
 - Original information section was added back to the left side of the map.
- Lionshead Loading and Delivery map original information section was added back to the left side of the map.

**VAIL VILLAGE
LOADING & DELIVERY**

TOWN OF VAIL

LIONSHEAD L&D MAP

LIONSHEAD LOADING & DELIVERY

vailgov.com/loadinganddelivery

Code of Conduct for Delivery Drivers

- Turn off engine, unless the vehicle is refrigerated and transporting perishables.
- Keep conversations quiet.
- Take care to be as quiet as possible, especially with movement of ramps.
- Turn radios and cell phones down.
- Use rubber tires on your two-wheelers, where possible.
- Use common sense - people are sleeping in the early morning hours.

Reminders

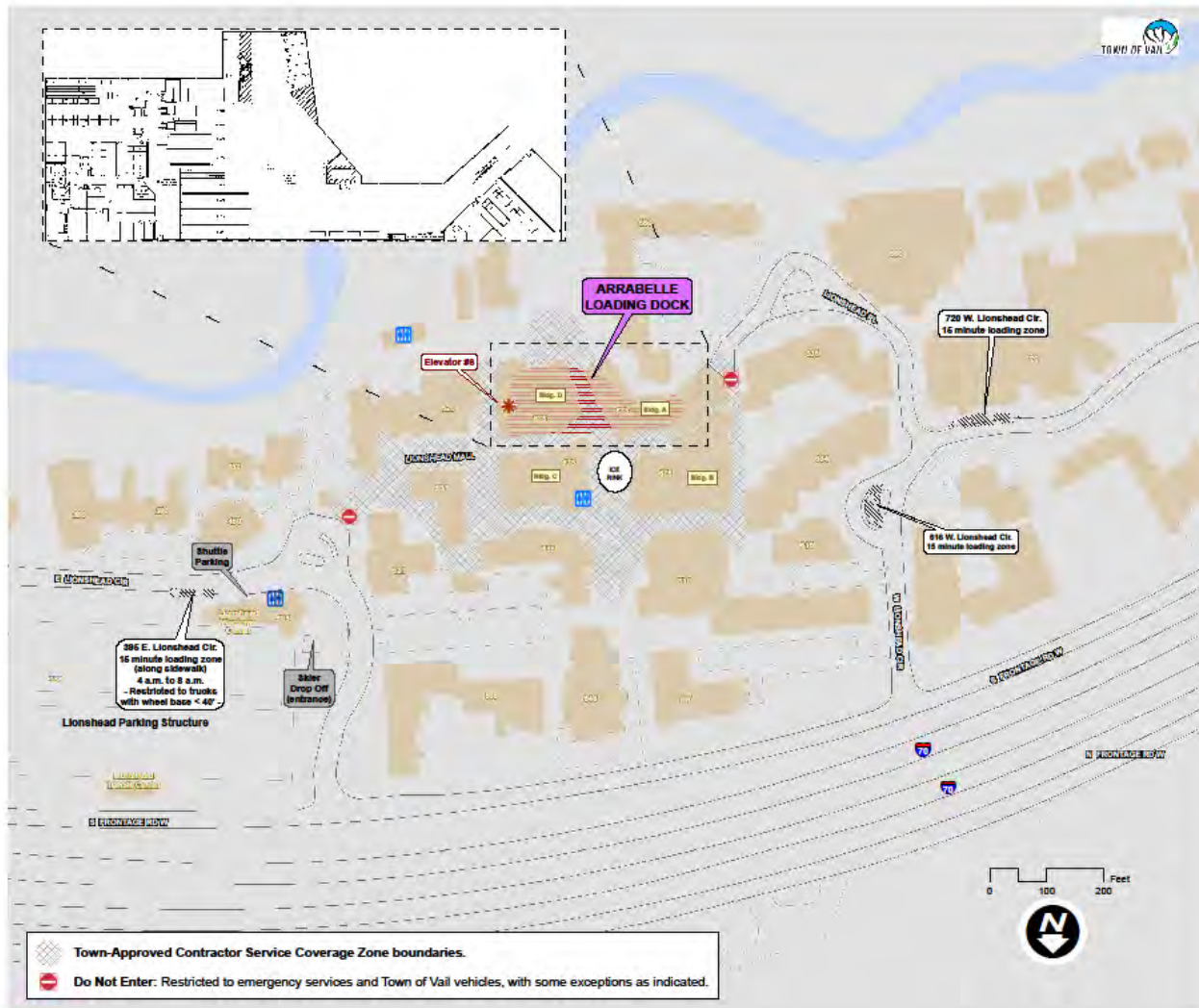
- Loading & Delivery map and info:
 - www.vailgov.com/loadinganddelivery

Questions about deliveries or special circumstances?

- Contact the Lionshead Pedestrian Mall Loading Dock Master: 970-754-7765
- Contact the Vail Village Pedestrian Mall Loading Dock Master: 970-754-3625
- Contact Checkpoint Charlie
 - Hours: 7:30 AM – 6:30 PM, daily
 - Phone: 970-476-7603 (after hours, contact Vail Police non-emergency: 970-479-2201)

Lionshead Pedestrian Mall Access

- All commercial goods to be delivered to the Lionshead Pedestrian Mall from the Arrabelle Loading Dock.
- All high-volume commercial carriers to access Lionshead Pedestrian Mall from the Arrabelle Loading Dock.



CHANGES TO ORDINANCE

- The definition of High Volume Commercial Carrier (HVCC) changed to add “and a variety of commercial goods”.
- The Load and Delivery billing section was removed.
- The words “and subsequent violations” were added to the penalty section to cover any violations after a third violation.

ADDRESSING CONCERNS

- Fed Ex, UPS, DHL and USPS (High Volume Commercial Carriers) are exempted from this ordinance/program and will continue to delivery to the Village and Lionshead as they have for years.



ADDRESSING CONCERNS

- Trash and recycling collection will not be affected by this ordinance/program.



ADDRESSING CONCERNS

- Cold storage of delivered goods.
- We have spoken to Eagle County Health Department.
- Primary concern is that perishable food is delivered at a temperature below 45 degrees.
- Goods are delivered as soon as they come off the truck.
- Food and beverage cannot be left outside.
- Bailment agreement in place to address any spoiled goods.
- Large cold storage is being ordered.
- Vast improvement over current delivery system.

ADDRESSING CONCERNS



ADDRESSING CONCERNS

- Loading Dock fee calculation;
 - Most vendors are in Vail 5/6 days a week (most tier 4 are 6 days)
 - Average time savings according to our data is a minimum of 4 hours per day for a tier 4 vendor
 - Minimum driver pay is \$25 per hour
 - \$100 per day, \$600 per week, \$2,580 per month and \$30,960 per year for a tier 4 vendor.
 - Remaining tiers were adjusted based on these figures
 - We have spoken to a vendor in each tier. Each vendor said they will have no additional expense or a small profit
 - Based on that information, additional charges passed on to businesses are unlikely

ADDRESSING CONCERNS

- Why are we doing this?









ADDRESSING CONCERNS

The concept for E-Vail Courier has its roots in a Town of Vail planning document dated August 1973. Excerpts from The Vail Plan identify the ongoing problem and a revolutionary solution for its time:

“The obvious problem as one attempts to walk within the town is, with the exception of a portion of Bridge Street in the Village and the plaza area of Lionshead, that it is literally impossible to walk without conflict with moving autos, parked autos, or unloading trucks...

“Service trucks entering into pedestrian areas to deliver materials to stores and restaurants is not a desirable process for the pedestrian areas will suffer in quality by the presence of large trucks. **It is recommended that a fleet of small electric vehicles be used as the eventual replacement for the trucks.**”

--The Vail Plan, 1973

Thank you



TOWN OF VAIL