

# Establishment of Special Development District No. 41 Marriott Residence Inn Lots 9-12, Buffehr Creek Resubdivision 1783 North Frontage Road West

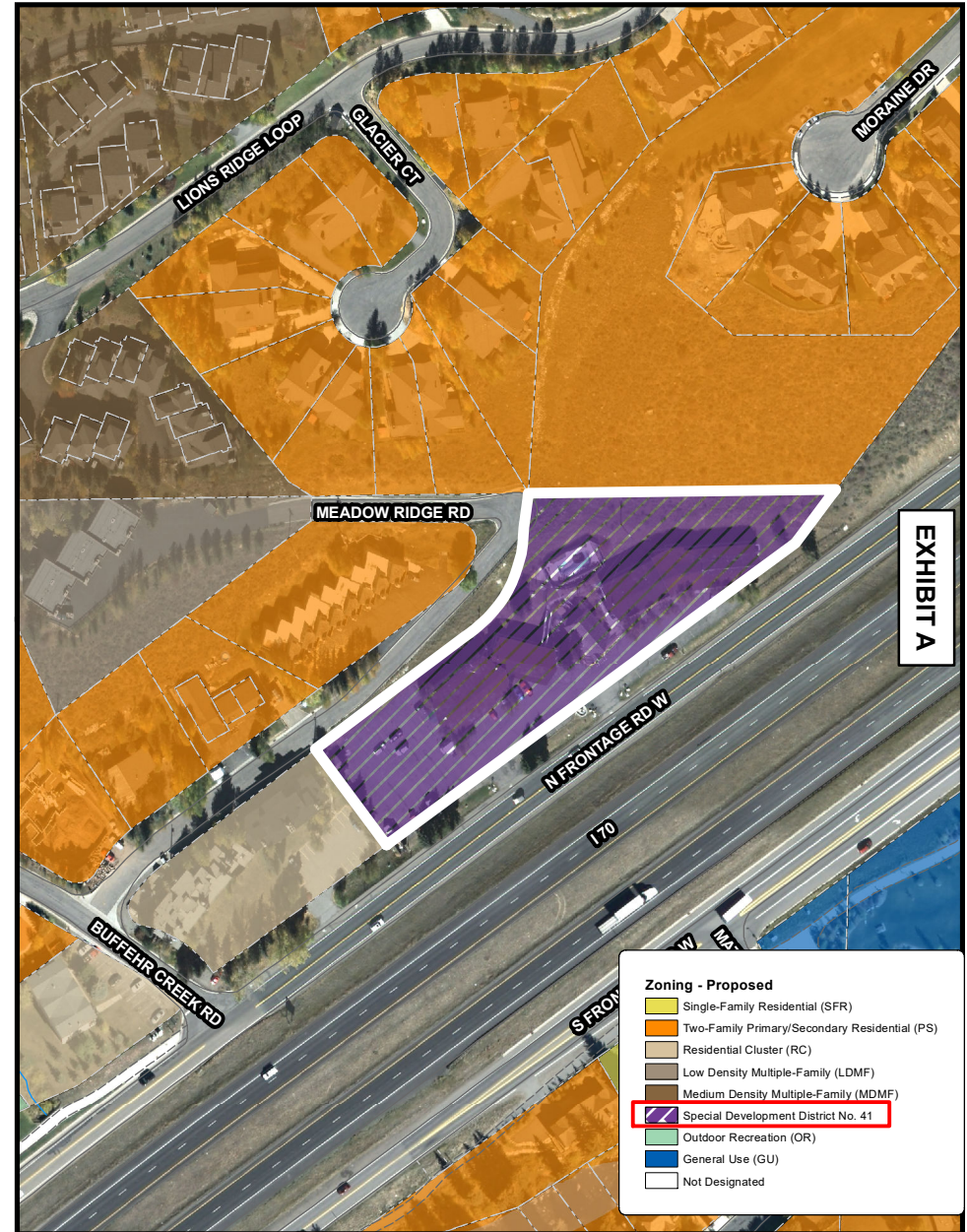
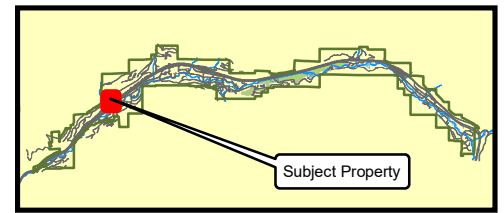
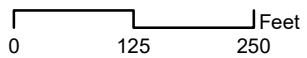


EXHIBIT A



This map was created by the Town of Vail GIS Team. Use of this map should be for general purposes only. The Town of Vail does not warrant the accuracy of the information contained herein. (where shown, parcel line work is approximate)

Last Modified: December 20, 2016

