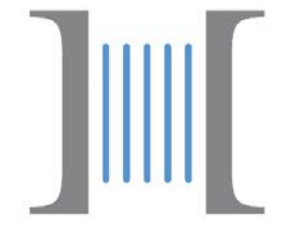


PROPOSED RESIDENTIAL DEVELOPMENT

Vail, Colorado
November 28, 2016

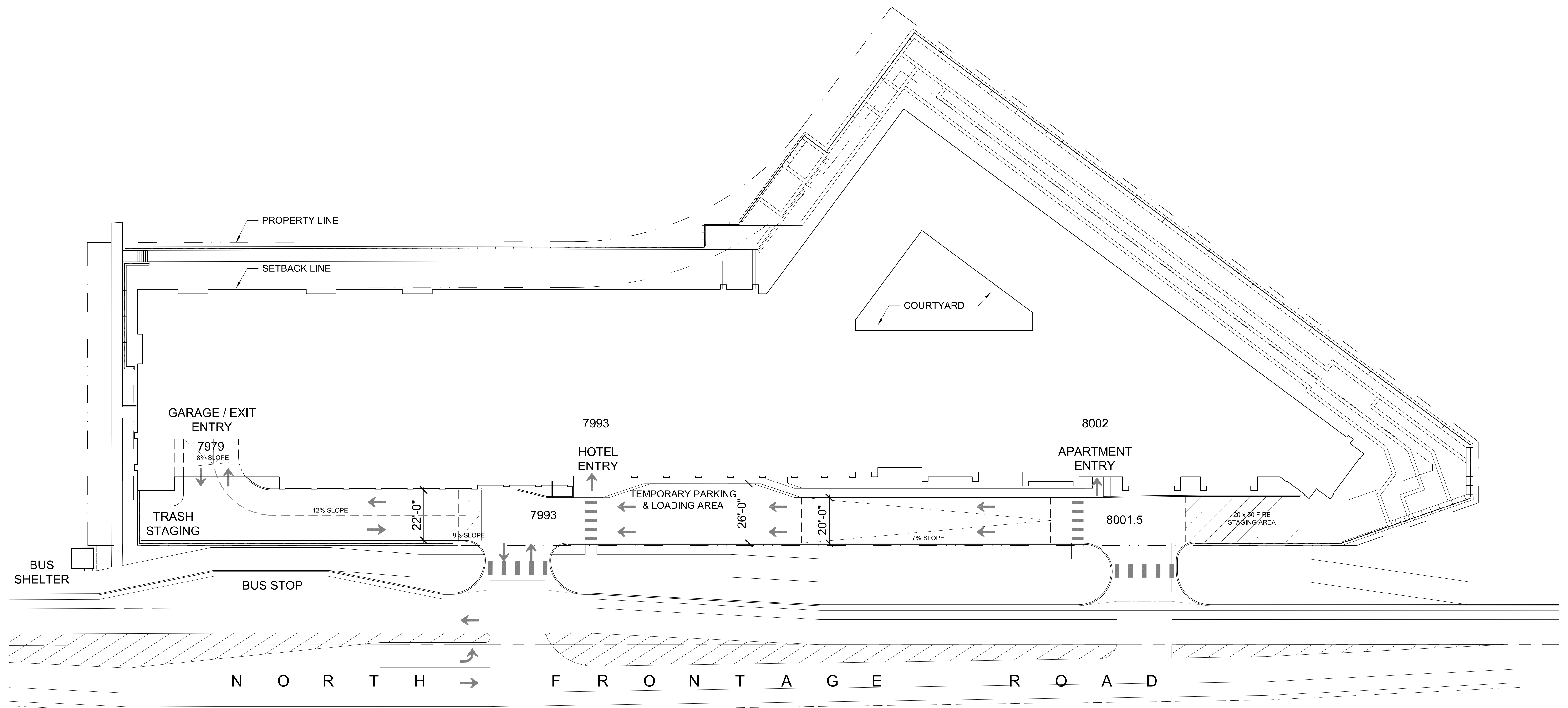
WRIGHT HEEREMA | ARCHITECTS

140 S. Dearborn St. Suite 200
Chicago, Illinois 60603
312 913 1010 Fax 913 1917



the harp group
A Crescendo Company





1 SITE PLAN

Scale: 1" = 20'-0"

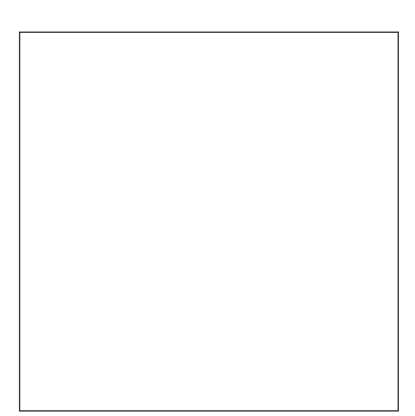
A010 - Proposed Site Plan

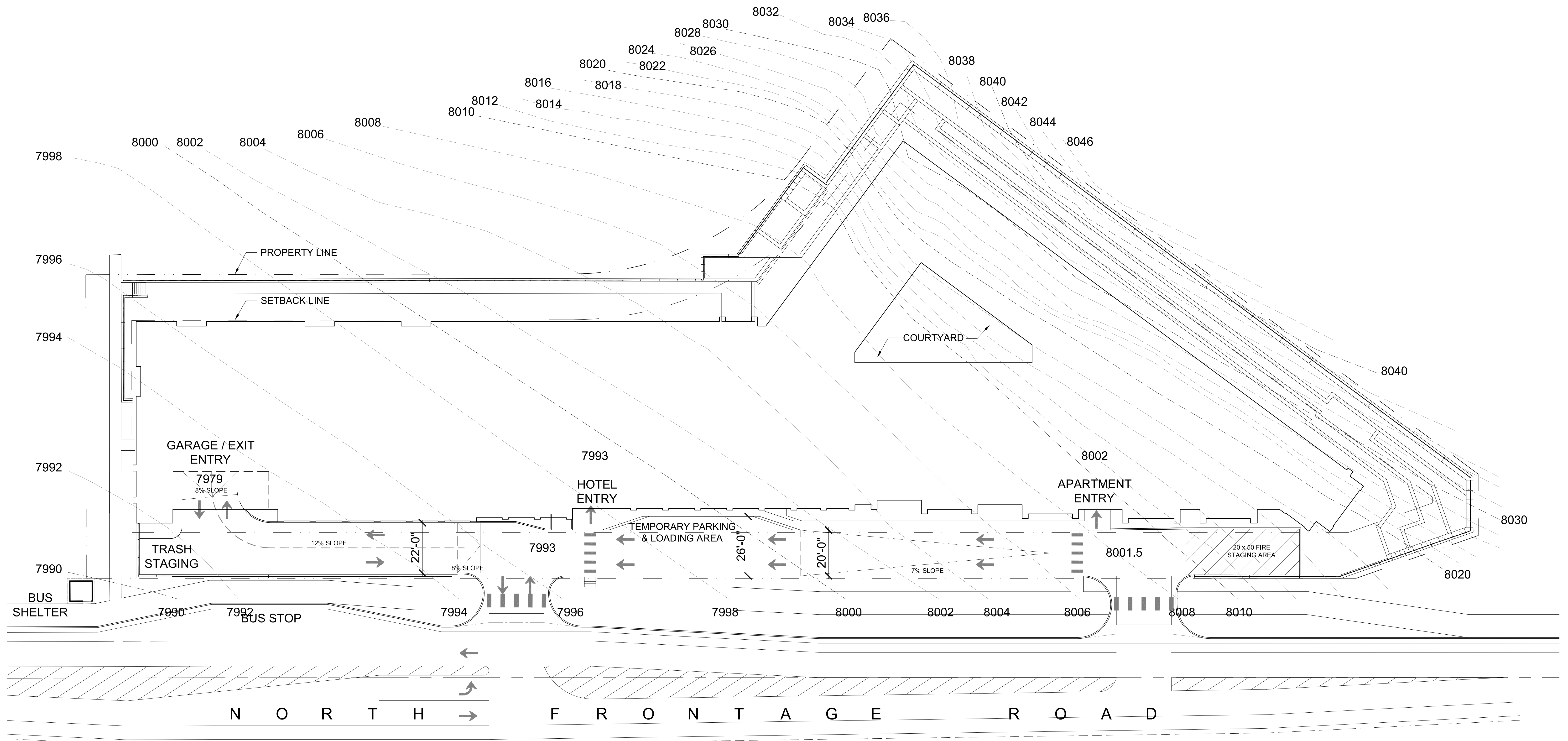
November 28, 2016



PROPOSED RESIDENTIAL DEVELOPMENT
 APARTMENTS AND ATTACHED PARKING STRUCTURE
 Vail, Colorado

WRIGHT HEEREMA | ARCHITECTS
 140 S. Dearborn St. Suite 200
 Chicago, Illinois 60603
 312.913.1010 Fax 913.1917
 www.wrightheeremearchitects.com





1 SITE PLAN

Scale: 1" = 20'-0"

A011 - Proposed Site Plan W/Contours

November 28, 2016

- APARTMENT PARKING 110 TOTAL
- HOTEL PARKING 210 TOTAL
- LEASED PARKING 40 TOTAL



1
LL-2 GARAGE FLOOR PLAN
 GROSS AREA: 81,882 SF Scale: 1" = 20'-0"
 APARTMENT PARKING: 186 SPACES

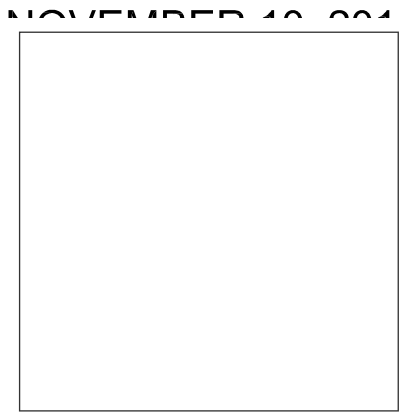
A100 - Floor Plan - Lower Level 2

PROPOSED RESIDENTIAL DEVELOPMENT

APARTMENTS AND ATTACHED PARKING STRUCTURE

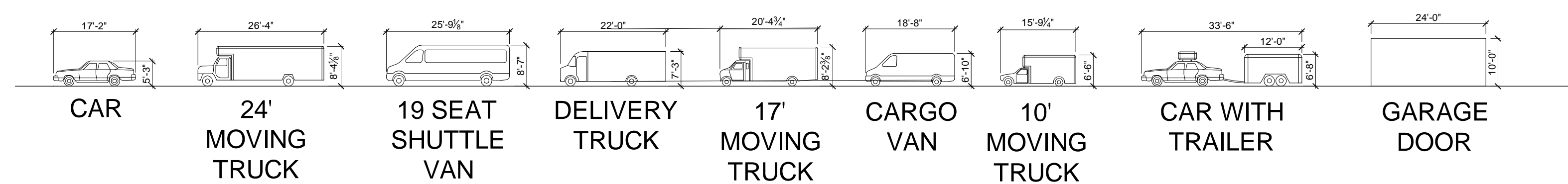
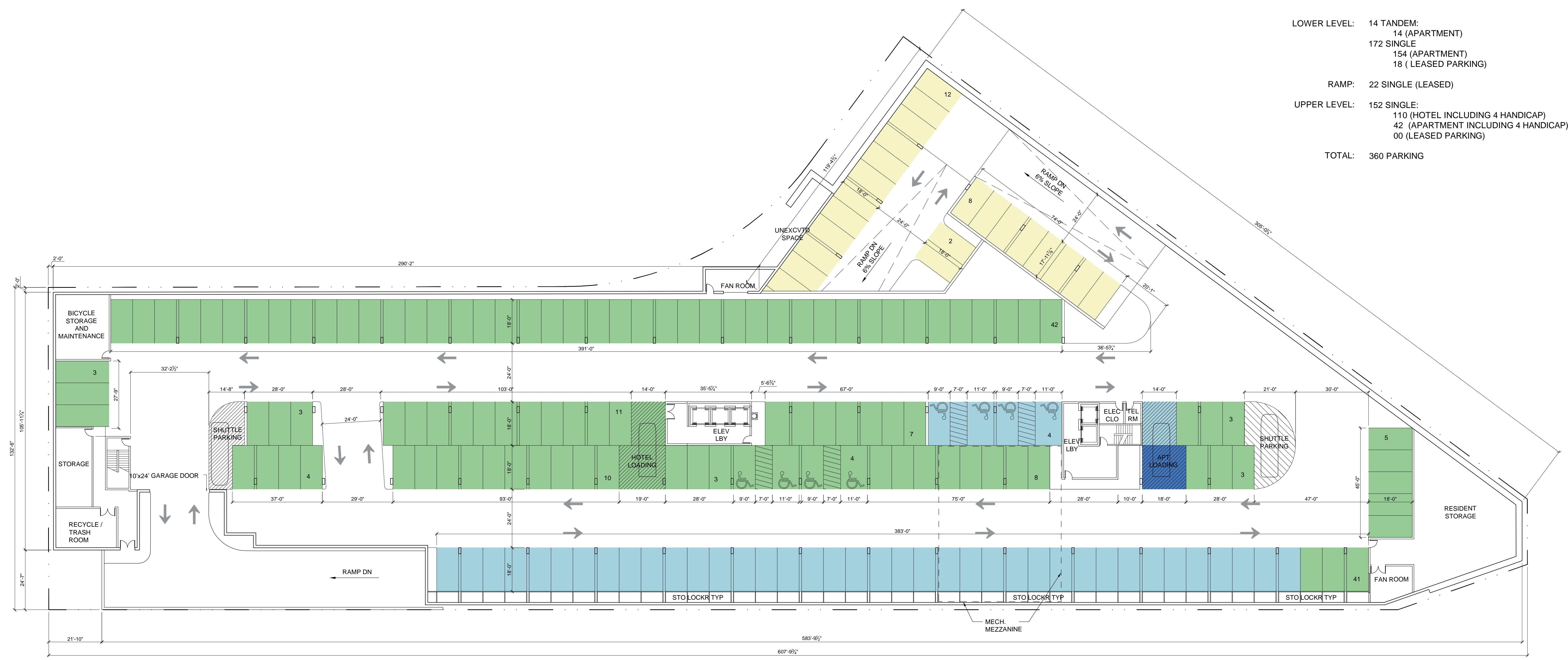
Vail, Colorado

November 28, 2016



- APARTMENT PARKING 110 TOTAL
- HOTEL PARKING 210 TOTAL
- LEASED PARKING 40 TOTAL

- LOWER LEVEL: 14 TANDEM:
 14 (APARTMENT)
 172 SINGLE
 154 (APARTMENT)
 18 (LEASED PARKING)
- RAMP: 22 SINGLE (LEASED)
- UPPER LEVEL: 152 SINGLE:
 110 (HOTEL INCLUDING 4 HANDICAP)
 42 (APARTMENT INCLUDING 4 HANDICAP)
 00 (LEASED PARKING)
- TOTAL: 360 PARKING



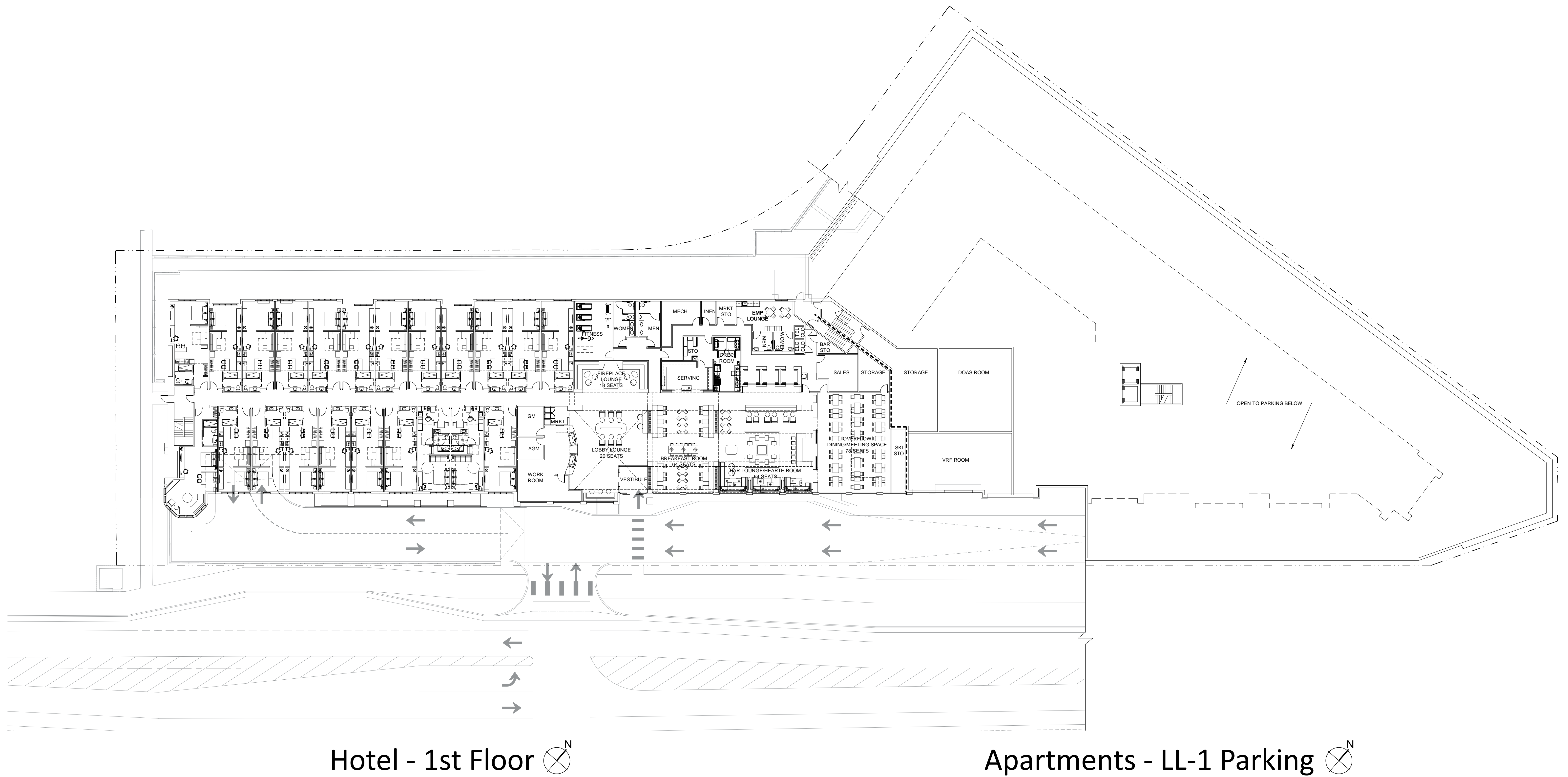
1 LL-1 GARAGE FLOOR PLAN
 GROSS AREA: 77,467 SF Scale: 1" = 20'-0"
 HOTEL PARKING: 174 SPACES
 NOVEMBER 18, 2016

A101 - Floor Plan - Lower Level 1

PROPOSED RESIDENTIAL DEVELOPMENT

APARTMENTS AND ATTACHED PARKING STRUCTURE

Vail, Colorado



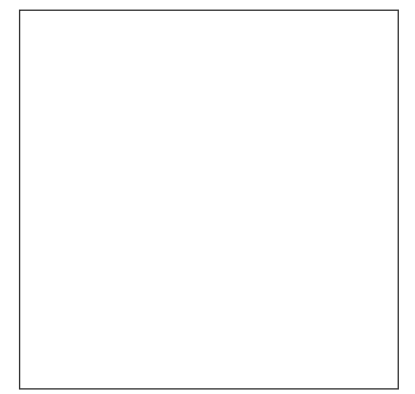
Hotel - 1st Floor

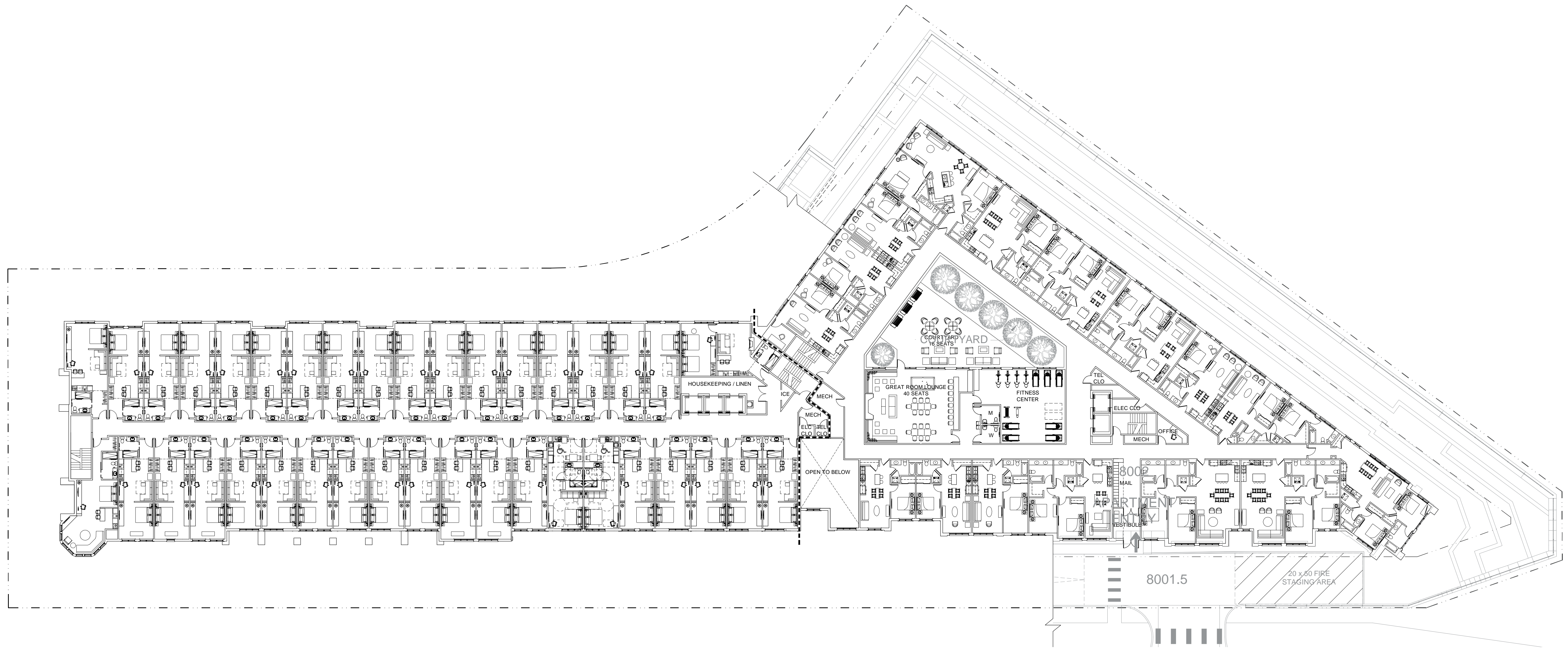
Apartment - LL-1 Parking

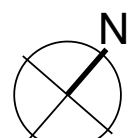
A102 - Floor Plan

PROPOSED RESIDENTIAL DEVELOPMENT
 APARTMENTS AND ATTACHED PARKING STRUCTURE
 Vail, Colorado

November 28, 2016





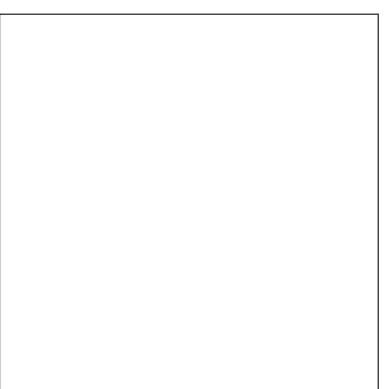
Hotel - 2nd Floor 

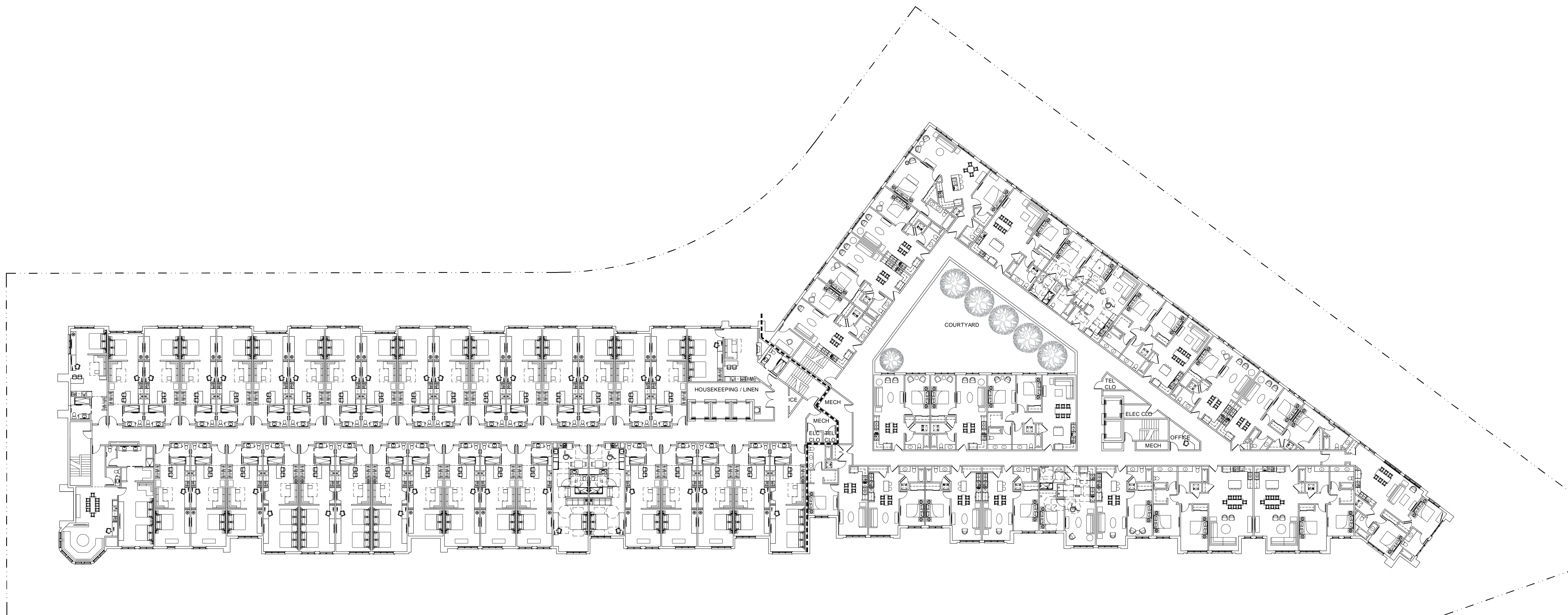
Apartments - 1st Floor 

A103 - Floor Plan


PROPOSED RESIDENTIAL DEVELOPMENT
 APARTMENTS AND ATTACHED PARKING STRUCTURE
 Vail, Colorado

November 28, 2016





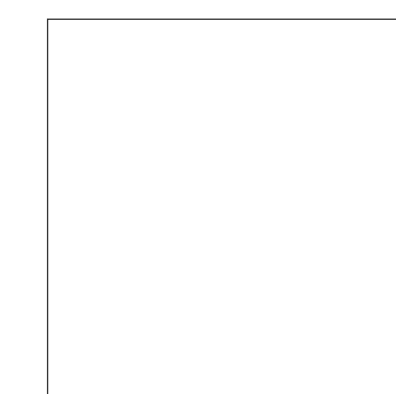
Hotel - 3rd Floor 

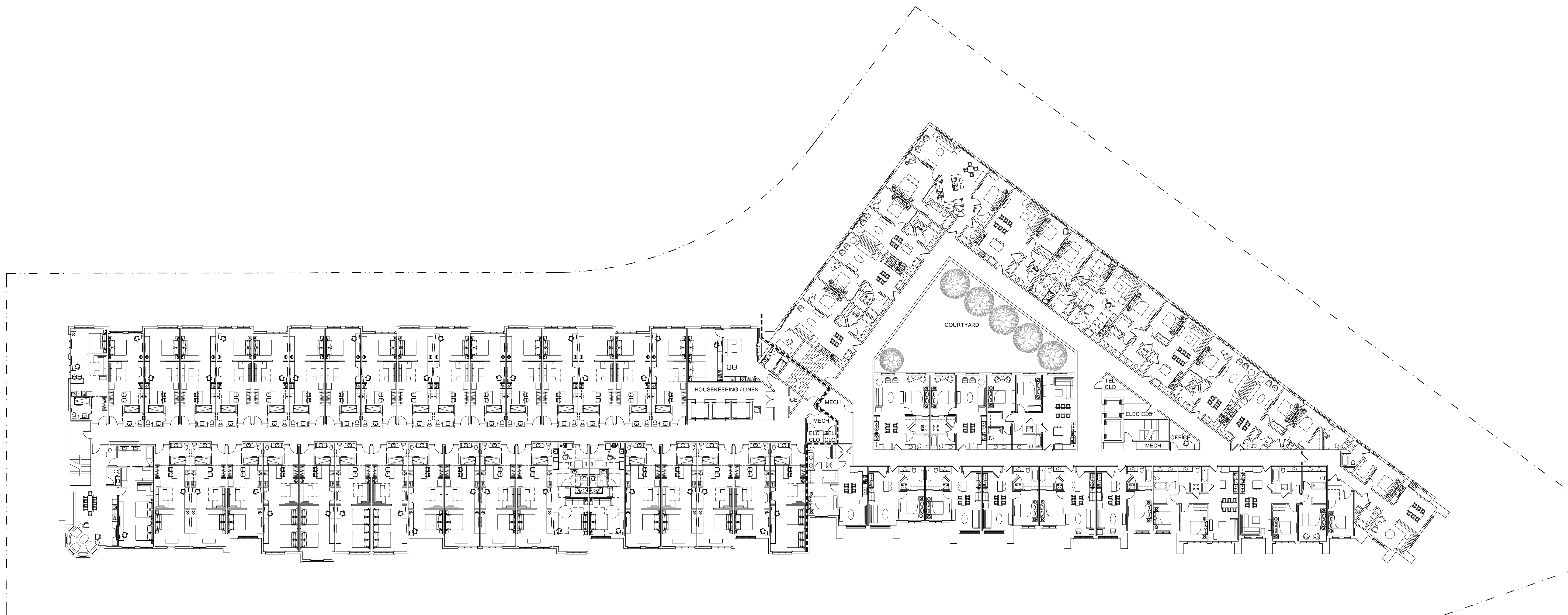
Apartments - 2nd Floor 

A104 - Floor Plan

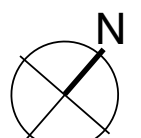
PROPOSED RESIDENTIAL DEVELOPMENT
 APARTMENTS AND ATTACHED PARKING STRUCTURE
 Vail, Colorado

November 28, 2016





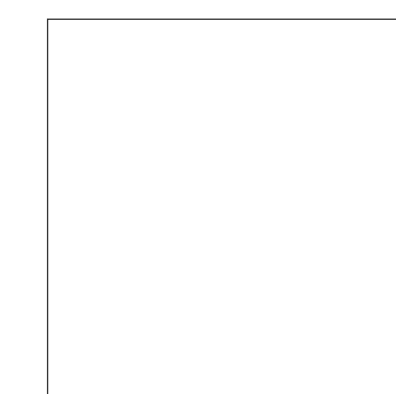
Hotel - 4th Floor 

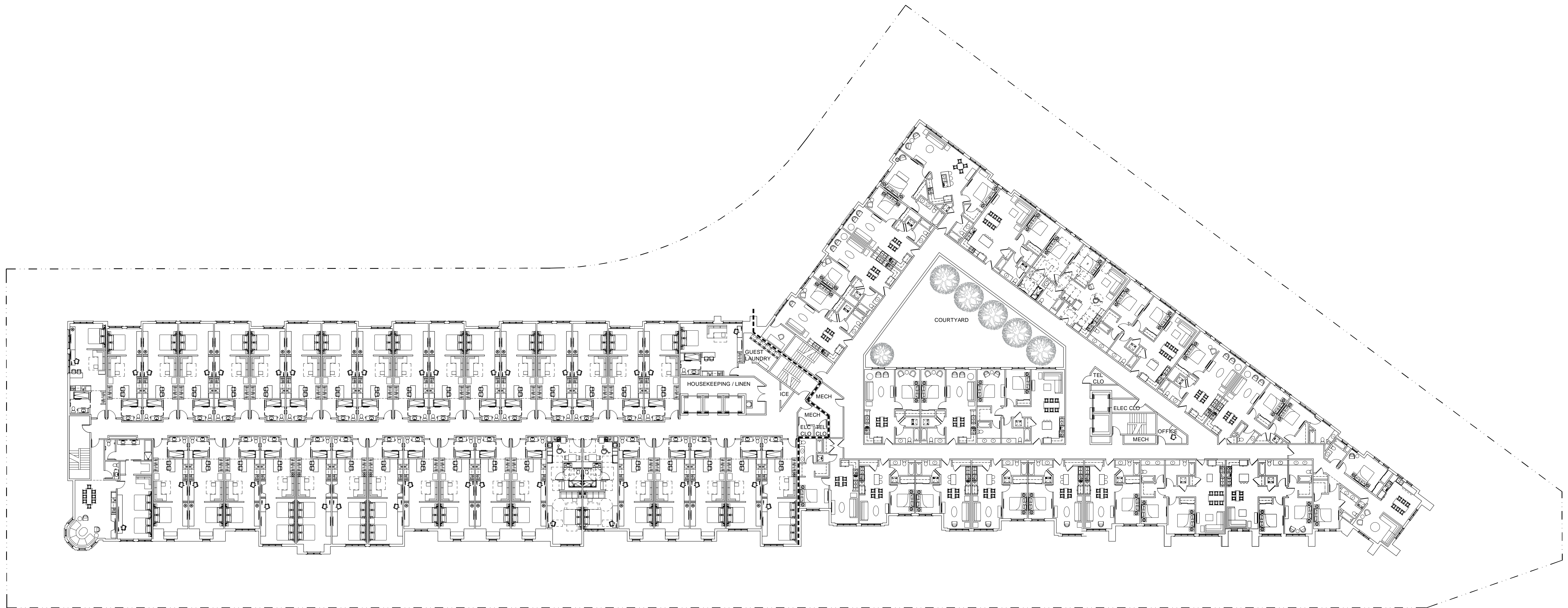
Apartments - 3rd Floor 

A105 - Floor Plan

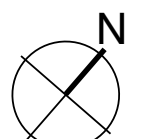
PROPOSED RESIDENTIAL DEVELOPMENT
 APARTMENTS AND ATTACHED PARKING STRUCTURE
 Vail, Colorado

November 28, 2016





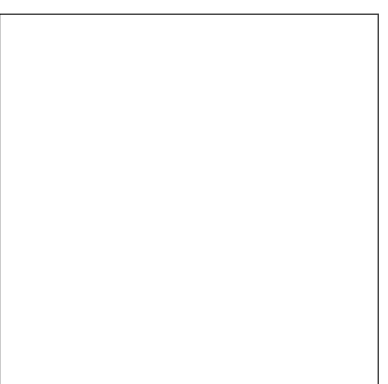
Hotel - 5th Floor 

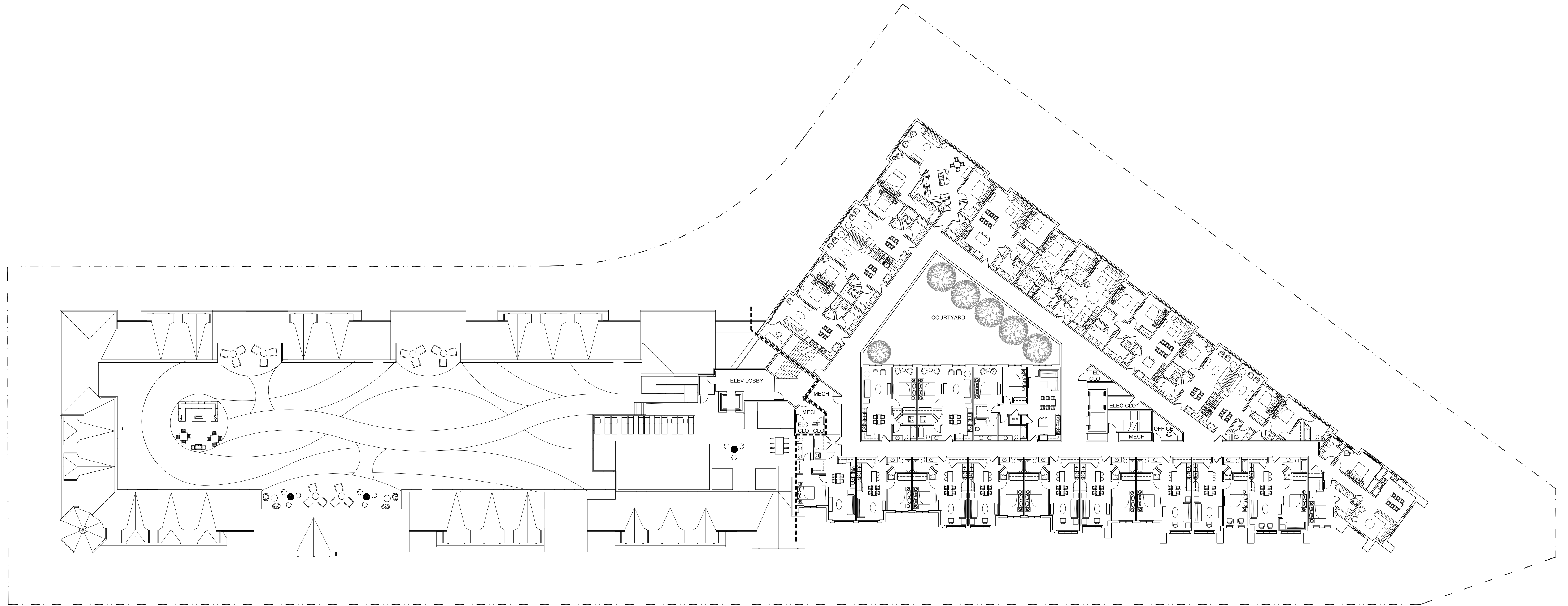
Apartments - 4th Floor 

A106 - Floor Plan


PROPOSED RESIDENTIAL DEVELOPMENT
 APARTMENTS AND ATTACHED PARKING STRUCTURE
 Vail, Colorado

November 28, 2016



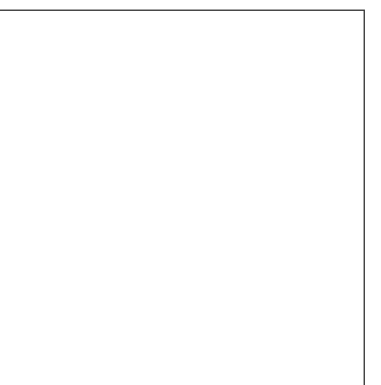


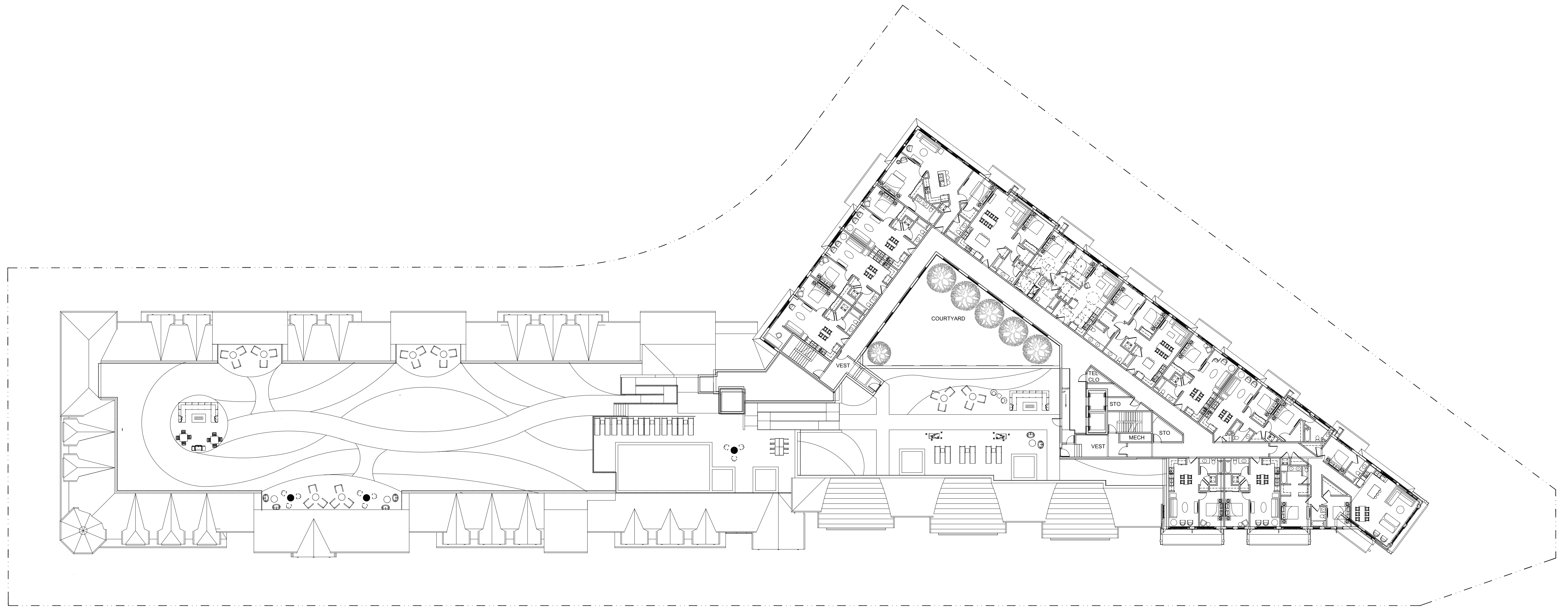
Hotel - Roof Deck 

Apartments - 5th Floor 

A107 - Floor Plan

November 28, 2016





Hotel - Roof Deck

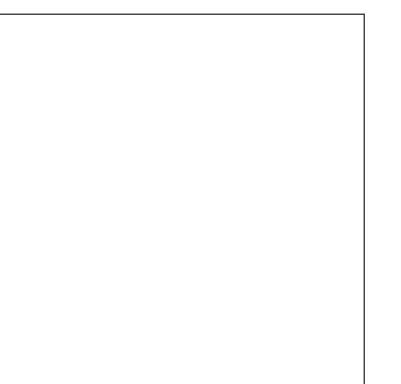


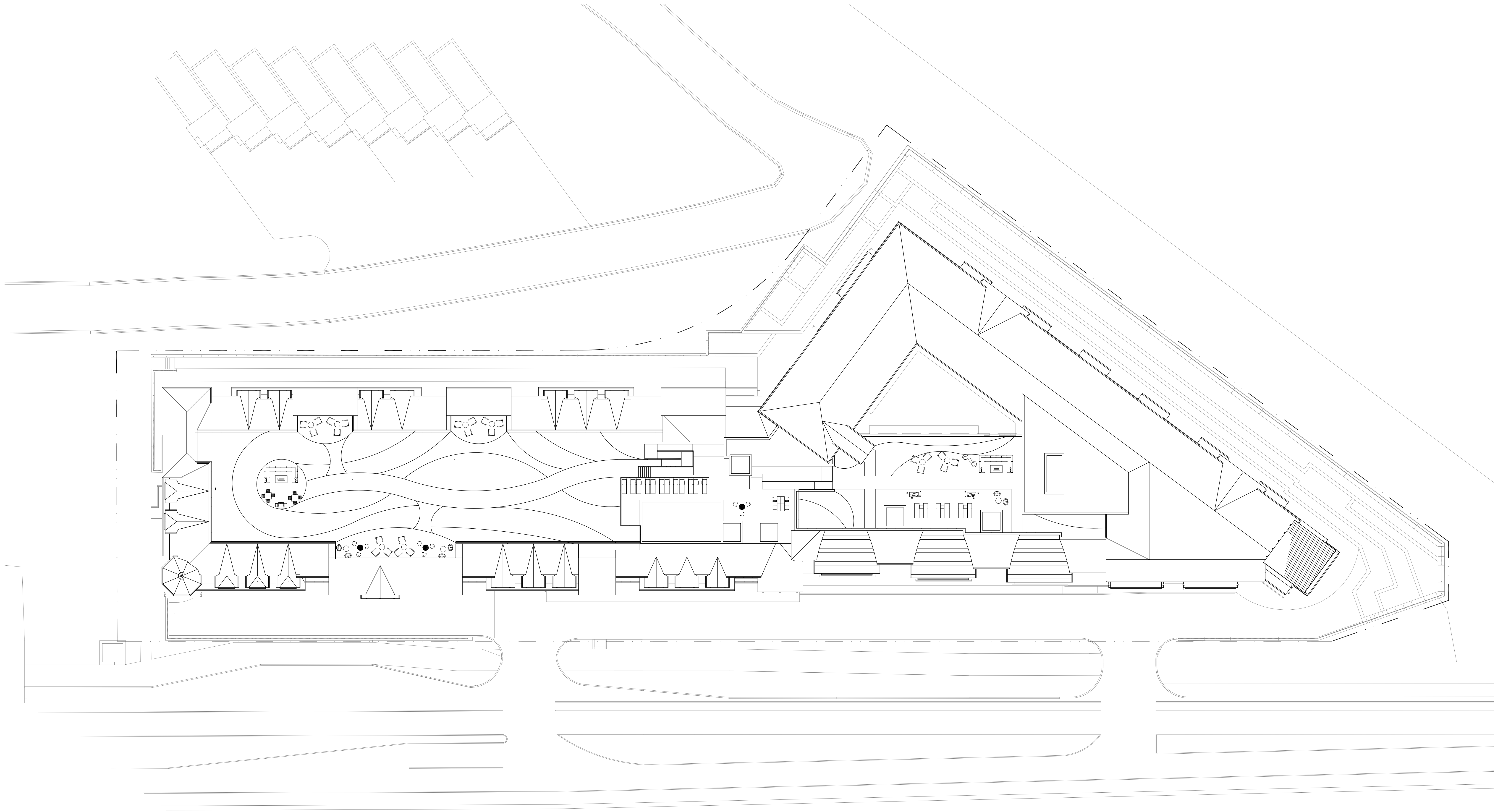
Apartments - 6th Floor



A108 - Floor Plan

November 28, 2016



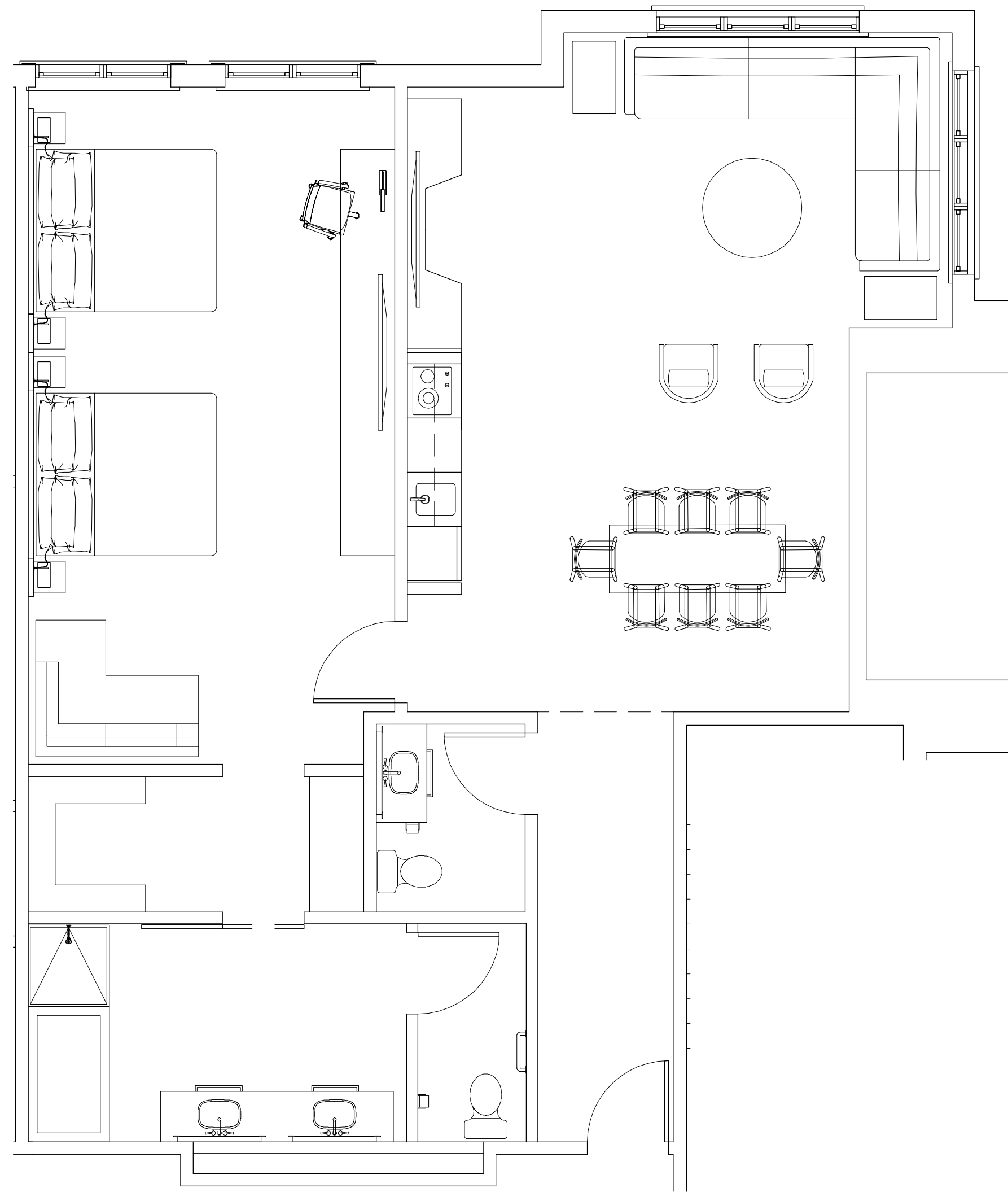


1 ROOF PLAN

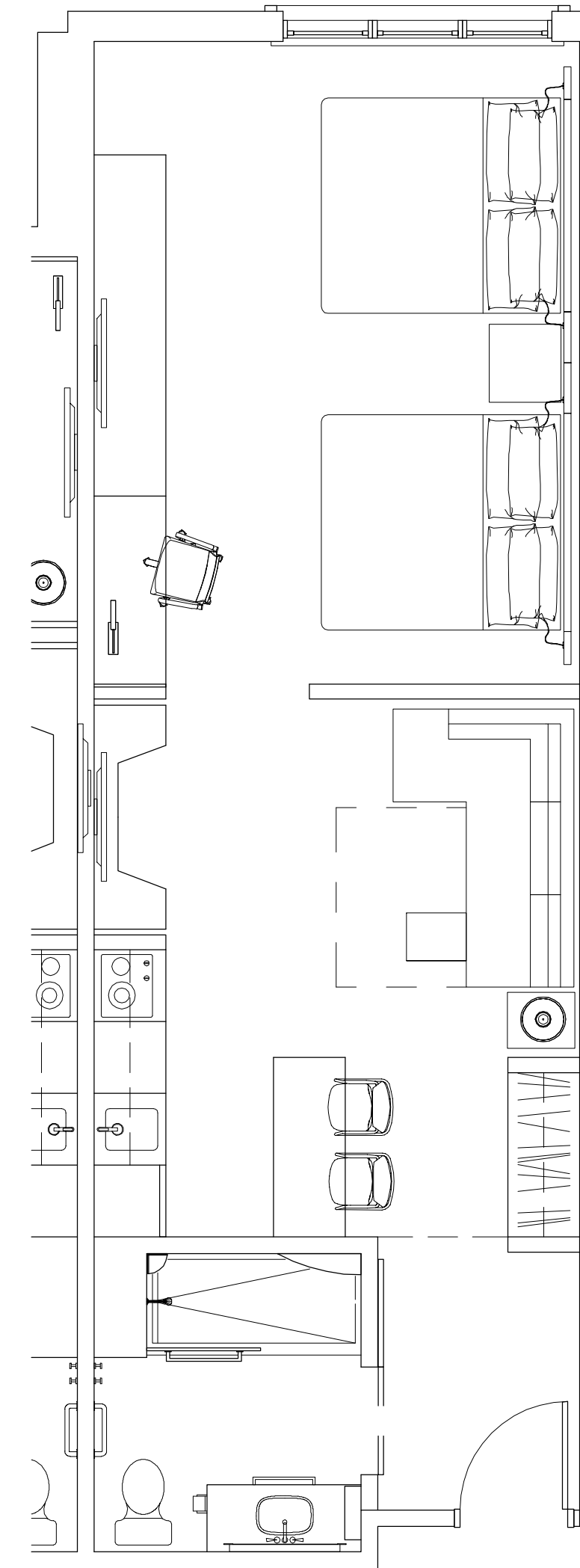
Scale: 1" = 20'-0"

A109 - Roof Plan

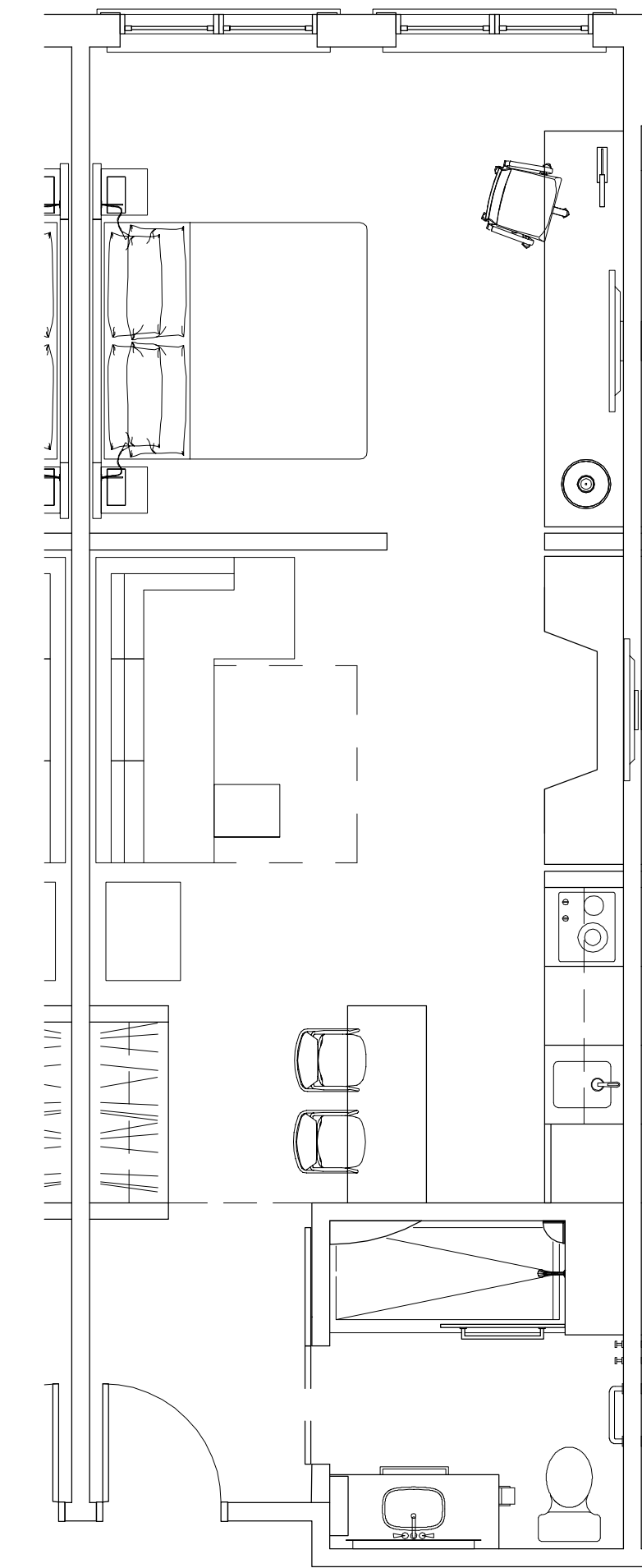
November 28, 2016



3 DOUBLE KING STUDIO SUITE HOTEL ROOM TYP.
1139 SF
Scale: 1/4" = 1'-0"



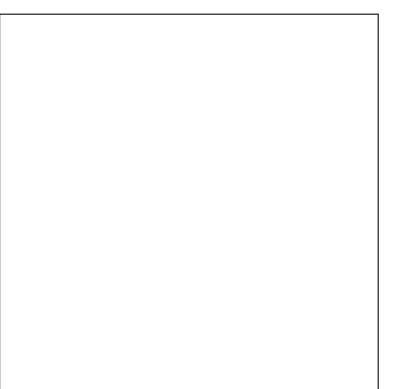
2 DOUBLE KING STUDIO HOTEL ROOM TYP.
563 SF
Scale: 1/4" = 1'-0"

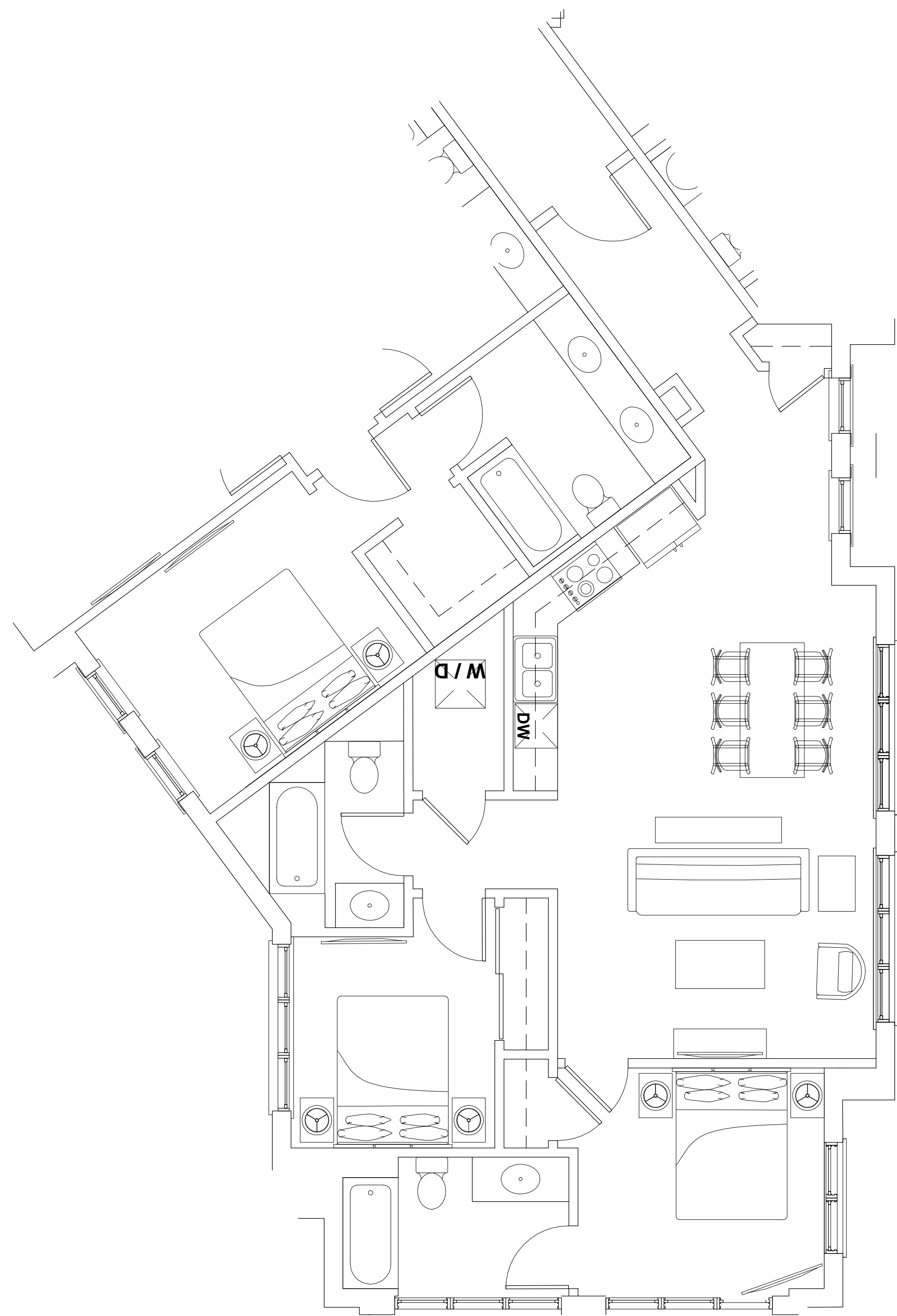


1 KING STUDIO HOTEL ROOM TYP.
508 SF
Scale: 1/4" = 1'-0"

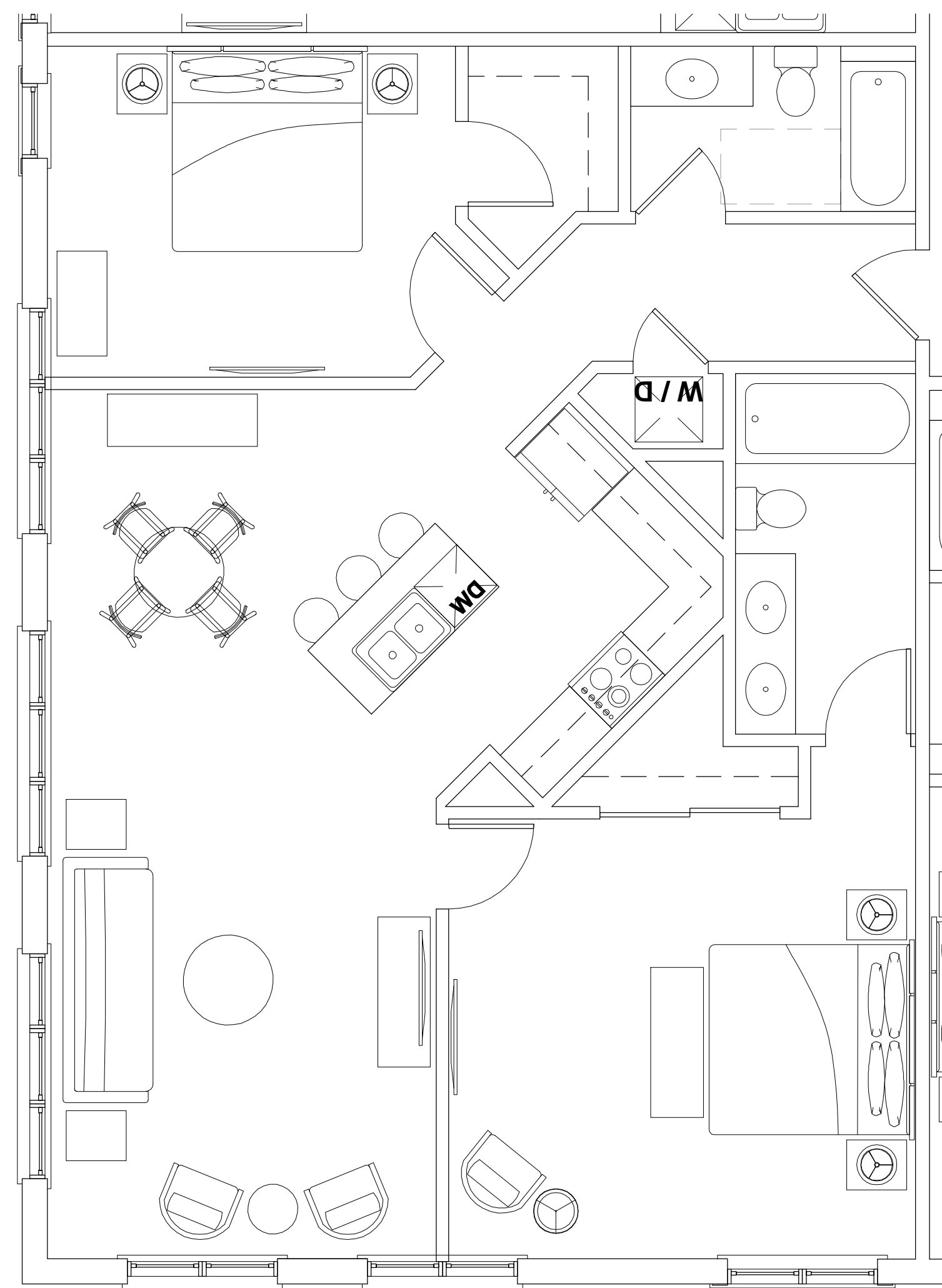
A110 - Enlarged Unit Plans - Hotel
PROPOSED RESIDENTIAL DEVELOPMENT
 APARTMENTS AND ATTACHED PARKING STRUCTURE
 Vail, Colorado

November 28, 2016

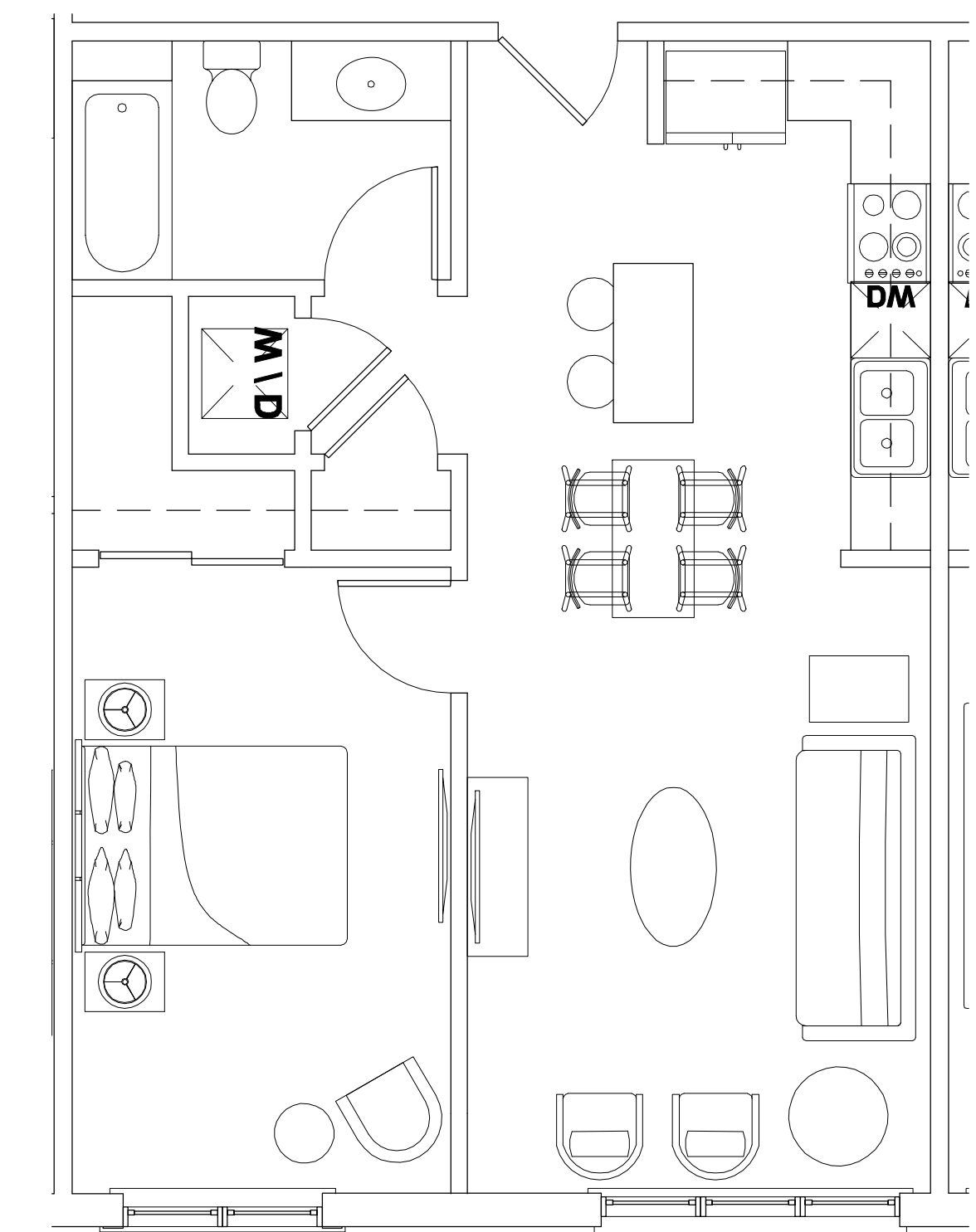




3 2 BEDROOM CORNER APARTMENT TYP.
1173 SF Scale: 1/4" = 1'-0"



2 2 BEDROOM APARTMENT TYP.
1136 SF Scale: 1/4" = 1'-0"



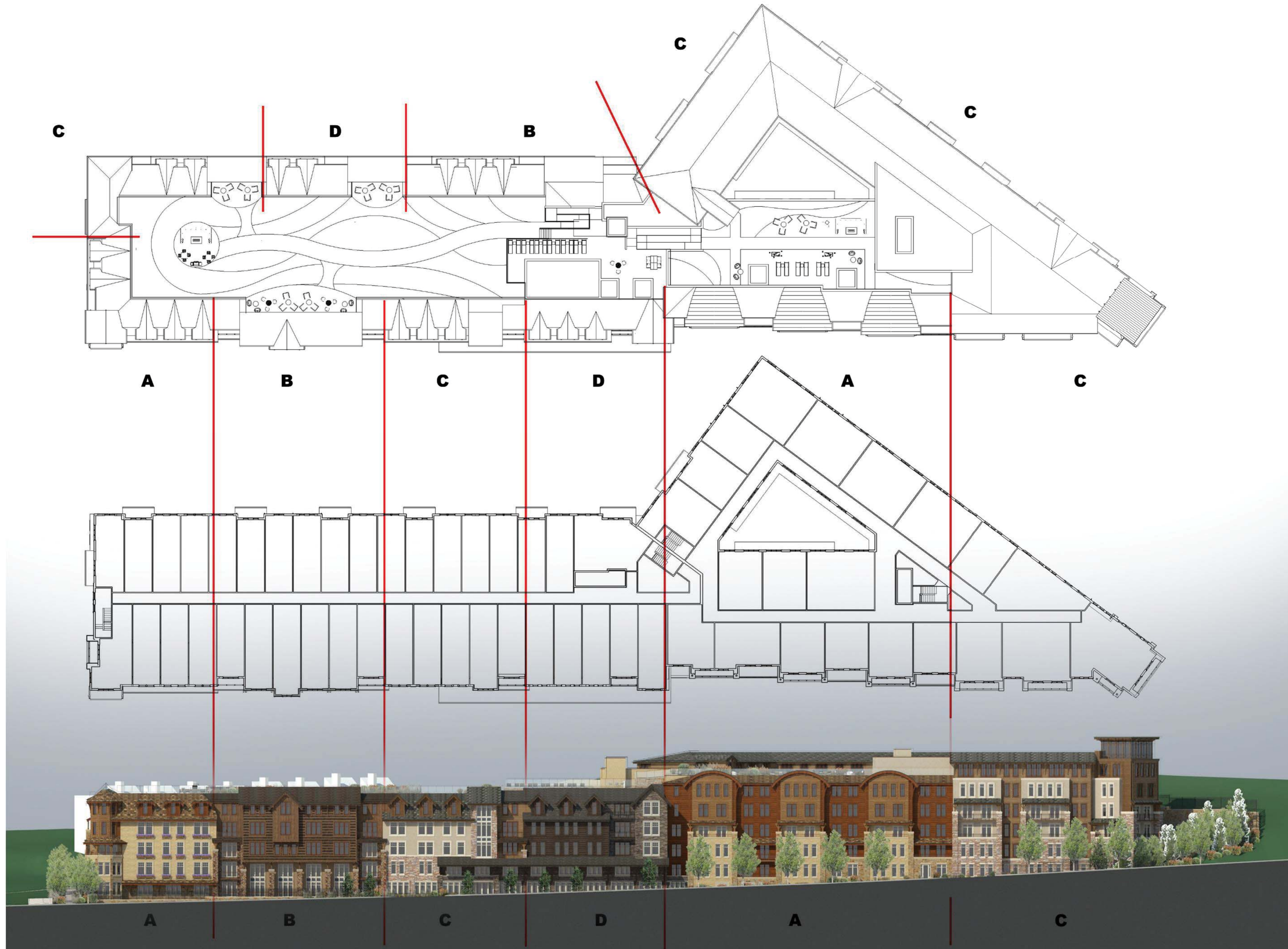
1 1 BEDROOM APARTMENT TYPE A TYP.
623 SF Scale: 1/4" = 1'-0"

A111 - Enlarged Unit Plans - Apartments

PROPOSED RESIDENTIAL DEVELOPMENT
APARTMENTS AND ATTACHED PARKING STRUCTURE
Vail, Colorado

November 28, 2016





M1 - Exterior Materials

November 28, 2016





A



B



C

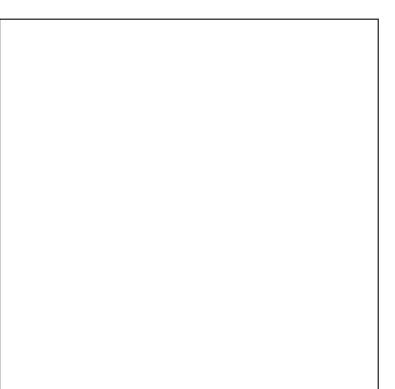


D

M2 - Exterior Materials

PROPOSED RESIDENTIAL DEVELOPMENT
 APARTMENTS AND ATTACHED PARKING STRUCTURE
 Vail, Colorado

November 28, 2016





South Elevation

M3 - Exterior Materials

PROPOSED RESIDENTIAL DEVELOPMENT
APARTMENTS AND ATTACHED PARKING STRUCTURE
Vail, Colorado

November 28, 2016

WRIGHT HEEREMA | ARCHITECTS

140 S. Dearborn St. Suite 200
Chicago, Illinois 60603
312.913.1010 Fax 913.1917
www.wrightheeremearchitects.com



South Elevation - A / B

M4 - Exterior Materials

PROPOSED RESIDENTIAL DEVELOPMENT
APARTMENTS AND ATTACHED PARKING STRUCTURE
Vail, Colorado

November 28, 2016

WRIGHT HEEREMA | ARCHITECTS

140 S. Dearborn St. Suite 200
Chicago, Illinois 60603
312.913.1010 Fax 913.1917
www.wrightheeremearchitects.com



South Elevation - C / D

M5 - Exterior Materials

PROPOSED RESIDENTIAL DEVELOPMENT
APARTMENTS AND ATTACHED PARKING STRUCTURE
Vail, Colorado

November 28, 2016

WRIGHT HEEREMA | ARCHITECTS

140 S. Dearborn St. Suite 200
Chicago, Illinois 60603
312.913.1010 Fax 913.1917
www.wrightheeremaarchitects.com